

CANB2 Rabbit pAb

CatalogNo: YN0515

Key Features

Host Species

- Rabbit

Reactivity

- Human,Rat

Applications

- WB,ELISA

MW

- 18kD (Observed)

Isotype

- IgG

Recommended Dilution Ratios

WB 1:500-2000

ELISA 1:5000-20000

Storage

Storage*

-15°C to -25°C/1 year(Do not lower than -25°C)

Formulation

Liquid in PBS containing 50% glycerol, and 0.02% sodium azide.

Basic Information

Clonality

Polyclonal

Immunogen Information

Immunogen

Synthesized peptide derived from part region of human protein

Specificity

CANB2 Polyclonal Antibody detects endogenous levels of protein.

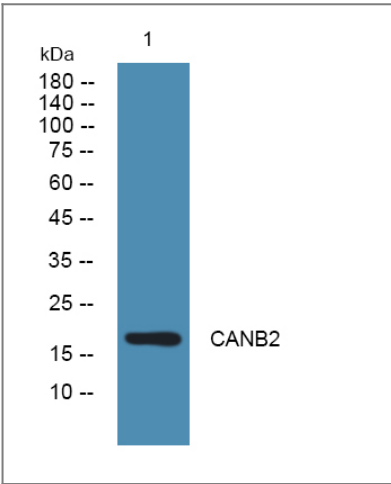
Target Information

Gene name

PPP3R2 CBLP PPP3RL

Protein Name	Calcineurin subunit B type 2 (Calcineurin B-like protein) (CBLP) (Calcineurin BII) (CNBII) (PPP3R1-like) (Protein phosphatase 2B regulatory subunit 2) (Protein phosphatase 3 regulatory subunit B beta isoform)		
	Organism	Gene ID	UniProt ID
	Human	5535;	Q96LZ3;
	Mouse		Q63811;
	Rat		P28470;
Cellular Localization	Mitochondrion . Localizes in the mitochondria in a SPATA33-dependent manner. .		
Tissue specificity	Testis-specific.		
Function	Function:Regulatory subunit of calcineurin, a calcium-dependent, calmodulin stimulated protein phosphatase. Confers calcium sensitivity.,miscellaneous:This protein has four functional calcium-binding sites.,similarity:Belongs to the calcineurin regulatory subunit family.,similarity:Contains 4 EF-hand domains.,subunit:Composed of a catalytic subunit (A) and a regulatory subunit (B).,tissue specificity:Testis specific.,		

Validation Data



Western blot analysis of lysates from KB cells, primary antibody was diluted at 1:1000, 4°over night

Contact information

Orders: order.cn@immunoway.com
Support: support.cn@immunoway.com
Telephone: 400-8787-807(China)
Website: http://www.immunoway.com.cn
Address: 2200 Ringwood Ave San Jose, CA 95131 USA



Please scan the QR code to access additional product information:
CANB2 Rabbit pAb

