

## ABCAC Rabbit pAb

CatalogNo: YN0472

### Key Features

#### Host Species

- Rabbit

#### Reactivity

- Human, Mouse

#### Applications

- IHC, IF

#### MW

- 285kD (Observed)

#### Isotype

- IgG

### Storage

**Storage\*** -15°C to -25°C/1 year (Do not lower than -25°C)

**Formulation** Liquid in PBS containing 50% glycerol, 0.5% BSA and 0.02% sodium azide.

### Recommended Dilution Ratios

IHC 1:50-300

IF 1:50-200

### Basic Information

**Clonality** Polyclonal

### Immunogen Information

**Immunogen** Synthesized peptide derived from human protein . at AA range: 2170-2250

**Specificity** ABCAC Polyclonal Antibody detects endogenous levels of protein.

### Target Information

**Gene name** ABCA12 ABC12

**Protein Name** ATP-binding cassette sub-family A member 12 (ATP-binding cassette transporter 12) (ATP-binding cassette 12)

Organism	Gene ID	UniProt ID
Human	<a href="#">26154</a> ;	<a href="#">Q86UK0</a> ;

**Cellular Localization**

Cytoplasmic vesicle, secretory vesicle membrane ; Multi-pass membrane protein . Golgi apparatus membrane . Localizes in the limiting membrane of the lamellar granules (LGs) (PubMed:17927575). Trafficks from the Golgi apparatus to the lamellar granules (LGs) at the cell periphery in the uppermost granular layer keratinocytes where ABCA12-positive LGs fuse with the keratinocyte-cell membrane to secrete their lipid content to the extracellular space of the stratum corneum (PubMed:16007253, PubMed:17927575). Co-localizes through the Golgi apparatus to the cell periphery with glucosylceramide (PubMed:17927575). .

**Tissue specificity**

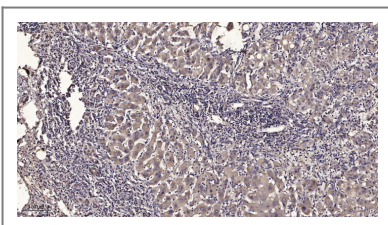
Mainly expressed in the stomach, placenta, testis and fetal brain (PubMed:12697999). Expressed in the upper epidermal layers, mainly the granular layers, of skin (PubMed:16007253, PubMed:17591952, PubMed:17927575). Expressed throughout the normal interfollicular epidermis with prominent expression in the stratum granulosum (PubMed:19179616). Expressed in alpha and beta cells of pancreatic islets (PubMed:32072744).

**Function**

Alternative products:Additional isoforms seem to exist,Disease:Defects in ABCA12 are the cause of ichthyosis harlequin (HI) [MIM:242500]; also known as harlequin fetus. HI is a very severe skin disorder in which the neonate is born with a thick covering of armor-like scales. The skin dries out to form hard diamond-shaped plaques separated by fissures, resembling 'armor plating'. The normal facial features are severely affected, with distortion of the lips (eclabion), eyelids (ectropion), ears, and nostrils. Affected babies are often born prematurely and rarely survive the perinatal period.,Disease:Defects in ABCA12 are the cause of ichthyosis lamellar type 2 (LI2) [MIM:601277]; also known as ichthyosis congenita IIB (ICR2B). LI is a non-bullous ichthyosis, a skin disorder characterized by abnormal cornification of the epidermis. It is one the most severe forms of ichthyoses apparent at birth and persisting throughout life. LI patients are born encased in a tight, shiny, translucent covering called collodion membrane. Over the first weeks of life, the collodion membrane is gradually replaced by generalized large, dark brown, plate-like scales with minimal to no erythroderma. Tautness of facial skin commonly results in ectropion, eclabium and scarring alopecia of the scalp. Common complications are severe heat intolerance and recurrent ear infections.,Domain:Multifunctional polypeptide with two homologous halves, each containing an hydrophobic membrane-anchoring domain and an ATP binding cassette (ABC) domain.,Function:Probable transporter involved in lipid homeostasis.,similarity:Belongs to the ABC transporter family. ABCA subfamily.,similarity:Contains 2 ABC transporter domains.,tissue specificity:Mainly expressed in the stomach, placenta, testis and fetal brain.,

---

**| Validation Data**



Immunohistochemical analysis of paraffin-embedded human liver cancer. 1, Antibody was diluted at 1:200(4° overnight). 2, Tris-EDTA,pH9.0 was used for antigen retrieval. 3,Secondary antibody was diluted at 1:200(room temperature, 45min).

## | Contact information

Orders: order.cn@immunoway.com  
Support: support.cn@immunoway.com  
Telephone: 400-8787-807(China)  
Website: <http://www.immunoway.com.cn>  
Address: 2200 Ringwood Ave San Jose, CA 95131 USA



Please scan the QR code  
to access additional  
product information:  
**ABCAC Rabbit pAb**

---

For Research Use Only. Not for Use in Diagnostic Procedures.

[Antibody](#) | [ELISA Kits](#) | [Protein](#) | [Reagents](#)