

ANGL5 Rabbit pAb

CatalogNo: YN0446

Key Features

Host Species

- Rabbit

Reactivity

- Human

Applications

- WB,ELISA

MW

- 42kD (Observed)

Isotype

- IgG

Recommended Dilution Ratios

WB 1:500-2000

ELISA 1:5000-20000

Storage

Storage*

-15°C to -25°C/1 year(Do not lower than -25°C)

Formulation

Liquid in PBS containing 50% glycerol, and 0.02% sodium azide.

Basic Information

Clonality

Polyclonal

Immunogen Information

Immunogen

Synthesized peptide derived from human protein . at AA range: 230-310

Specificity

ANGL5 Polyclonal Antibody detects endogenous levels of protein.

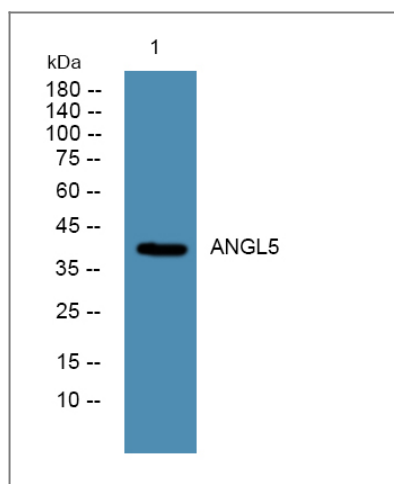
Target Information

Gene name

ANGPTL5 UNQ5795/PRO19600

Protein Name	Angiopoietin-related protein 5 (Angiopoietin-like protein 5)		
	Organism	Gene ID	UniProt ID
	Human	253935;	Q86XS5;
Cellular Localization	Secreted .		
Tissue specificity	Mainly expressed in adult heart.		
Function	similarity:Contains 1 fibrinogen C-terminal domain.,tissue specificity:Mainly expressed in adult heart.,		

Validation Data



Western blot analysis of lysates from HCT116 cells, primary antibody was diluted at 1:1000, 4°over night

Contact information

Orders: order.cn@immunoway.com
 Support: support.cn@immunoway.com
 Telephone: 400-8787-807(China)
 Website: <http://www.immunoway.com.cn>
 Address: 2200 Ringwood Ave San Jose, CA 95131 USA



Please scan the QR code to access additional product information:
ANGL5 Rabbit pAb

For Research Use Only. Not for Use in Diagnostic Procedures.

[Antibody](#) | [ELISA Kits](#) | [Protein](#) | [Reagents](#)