

## AL3B2 Rabbit pAb

CatalogNo: YN0428

### Key Features

#### Host Species

- Rabbit

#### Reactivity

- Human, Mouse

#### Applications

- WB, ELISA

#### MW

- 42kD (Observed)

#### Isotype

- IgG

### Recommended Dilution Ratios

**WB 1:500-2000**

**ELISA 1:5000-20000**

### Storage

#### Storage\*

-15°C to -25°C/1 year (Do not lower than -25°C)

#### Formulation

Liquid in PBS containing 50% glycerol, and 0.02% sodium azide.

### Basic Information

#### Clonality

Polyclonal

### Immunogen Information

#### Immunogen

Synthesized peptide derived from human protein . at AA range: 300-380

#### Specificity

AL3B2 Polyclonal Antibody detects endogenous levels of protein.

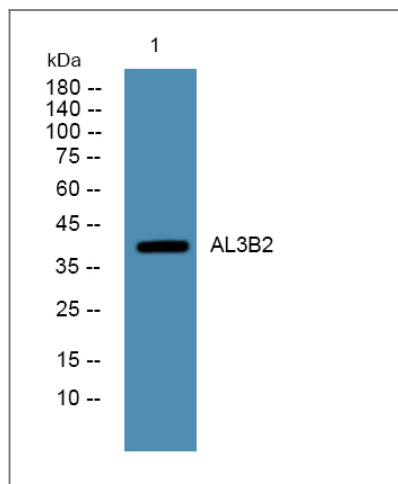
### Target Information

#### Gene name

ALDH3B2 ALDH8

<b>Protein Name</b>	Aldehyde dehydrogenase family 3 member B2 (Aldehyde dehydrogenase 8)		
	<b>Organism</b>	<b>Gene ID</b>	<b>UniProt ID</b>
	Human	<a href="#">222;</a>	<a href="#">P48448;</a>
<b>Cellular Localization</b>	Lipid droplet .		
<b>Tissue specificity</b>	Salivary gland.		
<b>Function</b>	Catalytic activity:An aldehyde + NAD(P)(+) + H(2)O = an acid + NAD(P)H.,pathway:Alcohol metabolism; ethanol degradation; acetate from ethanol: step 2/2.,similarity:Belongs to the aldehyde dehydrogenase family.,tissue specificity:Salivary gland.,		

## Validation Data



Western blot analysis of lysates from PC12 cells, primary antibody was diluted at 1:1000, 4°over night

## Contact information

Orders: [order.cn@immunoway.com](mailto:order.cn@immunoway.com)  
 Support: [support.cn@immunoway.com](mailto:support.cn@immunoway.com)  
 Telephone: 400-8787-807(China)  
 Website: <http://www.immunoway.com.cn>  
 Address: 2200 Ringwood Ave San Jose, CA 95131 USA



Please scan the QR code  
 to access additional  
 product information:  
**AL3B2 Rabbit pAb**