

PLCA Rabbit pAb

CatalogNo: YN0340

Key Features

Host Species

- Rabbit

Reactivity

- Human, Mouse

Applications

- WB, ELISA

MW

- 31kD (Observed)

Isotype

- IgG

Recommended Dilution Ratios

WB 1:500-2000**ELISA 1:5000-20000**

Storage

Storage*

-15°C to -25°C/1 year (Do not lower than -25°C)

Formulation

Liquid in PBS containing 50% glycerol, 0.5% BSA and 0.02% sodium azide.

Basic Information

Clonality

Polyclonal

Immunogen Information

Immunogen

Synthesized peptide derived from human protein . at AA range: 150-230

Specificity

PLCA Polyclonal Antibody detects endogenous levels of protein.

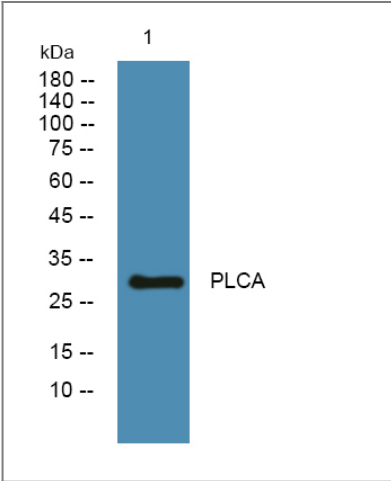
Target Information

Gene name

AGPAT1 G15

Protein Name	1-acyl-sn-glycerol-3-phosphate acyltransferase alpha (1-acylglycerol-3-phosphate O-acyltransferase 1) (1-AGP acyltransferase 1) (1-AGPAT 1) (Lysophosphatidic acid acyltransferase alpha) (LPAAT-alpha) (Protein G15)		
	Organism	Gene ID	UniProt ID
	Human	10554;	Q99943;
	Mouse		Q35083;
Cellular Localization	Endoplasmic reticulum membrane ; Multi-pass membrane protein .		
Tissue specificity	Widely expressed. Expressed in adipose tissue and at high levels in testis and pancreas. Expressed at lower levels in tissues such as heart, brain, placenta, kidney, lung, spleen, thymus, prostate, ovary, intestine, colon, leukocyte and liver.		
Function	Catalytic activity:Acyl-CoA + 1-acyl-sn-glycerol 3-phosphate = CoA + 1,2-diacyl-sn-glycerol 3-phosphate.,Domain:The HXXXXD motif is essential for acyltransferase activity and may constitute the binding site for the phosphate moiety of the glycerol-3-phosphate.,Function:Converts lysophosphatidic acid (LPA) into phosphatidic acid by incorporating an acyl moiety at the sn-2 position of the glycerol backbone.,pathway:Phospholipid metabolism; CDP-diacylglycerol biosynthesis; CDP-diacylglycerol from sn-glycerol 3-phosphate: step 2/3.,similarity:Belongs to the 1-acyl-sn-glycerol-3-phosphate acyltransferase family.,		

Validation Data



Western blot analysis of lysates from PC12 cells, primary antibody was diluted at 1:1000, 4°over night

Contact information

Orders: order.cn@immunoway.com
Support: support.cn@immunoway.com
Telephone: 400-8787-807(China)
Website: <http://www.immunoway.com.cn>
Address: 2200 Ringwood Ave San Jose, CA 95131 USA



Please scan the QR code
to access additional
product information:
PLCA Rabbit pAb

For Research Use Only. Not for Use in Diagnostic Procedures.

[Antibody](#) | [ELISA Kits](#) | [Protein](#) | [Reagents](#)