

ALKB2 Rabbit pAb

CatalogNo: YN0322

Key Features

Host Species

- Rabbit

Reactivity

- Human, Mouse

Applications

- WB, ELISA

MW

- 28kD (Observed)

Isotype

- IgG

Recommended Dilution Ratios

WB 1:500-2000**ELISA 1:5000-20000**

Storage

Storage*

-15°C to -25°C/1 year (Do not lower than -25°C)

Formulation

Liquid in PBS containing 50% glycerol, and 0.02% sodium azide.

Basic Information

Clonality

Polyclonal

Immunogen Information

Immunogen

Synthesized peptide derived from human protein . at AA range: 140-220

Specificity

ALKB2 Polyclonal Antibody detects endogenous levels of protein.

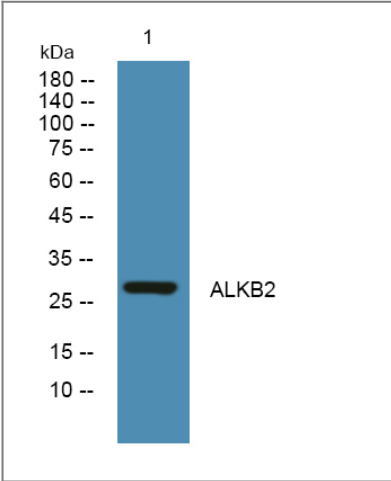
Target Information

Gene name

ALKBH2 ABH2

Protein Name	Alpha-ketoglutarate-dependent dioxygenase alkB homolog 2 (Alkylated DNA repair protein alkB homolog 2) (DNA oxidative demethylase ALKBH2) (Oxy DC1)		
	Organism	Gene ID	UniProt ID
	Human	121642;	Q6NS38;
	Mouse		Q6P6J4;
Cellular Localization	Nucleus . Nucleus, nucleolus . Nucleus, nucleoplasm . Relocates to the replication foci during S-phase. .		
Tissue specificity	Detected in colon, small intestine, ovary, testis, prostate, skeletal muscle, heart, liver and urinary bladder.		
Function	cofactor: Binds 1 Fe(2+) ion per subunit., enzyme regulation: Activated by ascorbate., Function: Dioxygenase that repairs alkylated DNA and RNA containing 1-methyladenine and 3-methylcytosine by oxidative demethylation. Has strong preference for double-stranded DNA. Has low efficiency with single-stranded substrates. Requires molecular oxygen, alpha-ketoglutarate and iron., similarity: Belongs to the alkB family., subcellular location: Detected in replication foci during S-phase., tissue specificity: Detected in colon, small intestine, ovary, testis, prostate, skeletal muscle, heart, liver and urinary bladder.,		

Validation Data



Western blot analysis of lysates from A431 cells, primary antibody was diluted at 1:1000, 4°over night

Contact information

Orders: order.cn@immunoway.com
Support: support.cn@immunoway.com
Telephone: 400-8787-807(China)
Website: http://www.immunoway.com.cn
Address: 2200 Ringwood Ave San Jose, CA 95131 USA



Please scan the QR code to access additional product information:
ALKB2 Rabbit pAb

