

RFC5 Rabbit pAb

CatalogNo: YN0313

Key Features

Host Species

- Rabbit

Reactivity

- Human, Mouse

Applications

- WB, ELISA

MW

- 37kD (Observed)

Isotype

- IgG

Storage

Storage* -15°C to -25°C/1 year (Do not lower than -25°C)

Formulation Liquid in PBS containing 50% glycerol, 0.5% BSA and 0.02% sodium azide.

Recommended Dilution Ratios

WB 1:500-2000

ELISA 1:5000-20000

Basic Information

Clonality Polyclonal

Immunogen Information

Immunogen Synthesized peptide derived from human protein . at AA range: 110-190

Specificity RFC5 Polyclonal Antibody detects endogenous levels of protein.

Target Information

Gene name RFC5

Protein Name Replication factor C subunit 5 (Activator 1 36 kDa subunit) (A1 36 kDa subunit) (Activator 1 subunit 5) (Replication factor C 36 kDa subunit) (RF-C 36 kDa subunit) (RFC36)

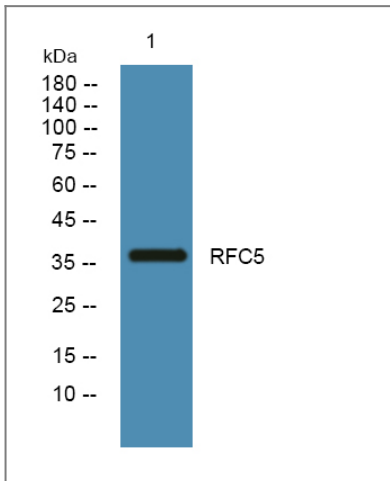
Organism	Gene ID	UniProt ID
Human	5985;	P40937;
Mouse		Q9D0F6;

Cellular Localization Nucleus .

Tissue specificity Brain ,Muscle ,Skin ,

Function Caution:The sequence shown here is derived from an Ensembl automatic analysis pipeline and should be considered as preliminary data. ,Function:The elongation of primed DNA templates by DNA polymerase delta and epsilon requires the action of the accessory proteins proliferating cell nuclear antigen (PCNA) and activator 1. ,similarity:Belongs to the activator 1 small subunits family. ,subunit:Heterotetramer of subunits RFC2 , RFC3 , RFC4 and RFC5 that can form a complex either with RFC1 or with RAD17. The former interacts with PCNA in the presence of ATP , while the latter has ATPase activity but is not stimulated by PCNA. ,

Validation Data



Western blot analysis of lysates from Jurkat cells, primary antibody was diluted at 1:1000, 4°C over night

Contact information

Orders: order.cn@immunoway.com
Support: support.cn@immunoway.com
Telephone: 400-8787-807(China)
Website: <http://www.immunoway.com.cn>
Address: 2200 Ringwood Ave San Jose, CA 95131 USA



Please scan the QR code to access additional product information:
RFC5 Rabbit pAb

