

WNT7A Rabbit pAb

CatalogNo: YN0287

Key Features

Host Species

- Rabbit

Reactivity

- Human, Mouse

Applications

- WB, ELISA

MW

- 38kD (Observed)

Isotype

- IgG

Recommended Dilution Ratios

WB 1:500-2000

ELISA 1:5000-20000

Storage

Storage*

-15°C to -25°C/1 year (Do not lower than -25°C)

Formulation

Liquid in PBS containing 50% glycerol, and 0.02% sodium azide.

Basic Information

Clonality

Polyclonal

Immunogen Information

Immunogen

Synthesized peptide derived from human protein . at AA range: 110-190

Specificity

WNT7A Polyclonal Antibody detects endogenous levels of protein.

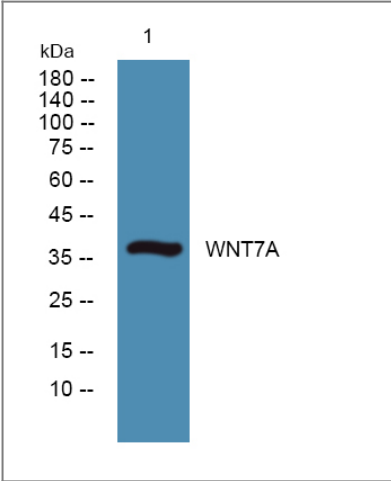
Target Information

Gene name

WNT7A

Protein Name	Protein Wnt-7a		
	Organism	Gene ID	UniProt ID
	Human	7476;	O00755;
	Mouse		P24383;
Cellular Localization	Secreted, extracellular space, extracellular matrix . Secreted .		
Tissue specificity	Expression is restricted to placenta, kidney, testis, uterus, fetal lung, and fetal and adult brain.		
Function	Disease:Defects in WNT7A are a cause of Fuhrmann syndrome [MIM:228930]; also called fibular aplasia or hypoplasia femoral bowing and poly- syn- and oligodactyly. Fuhrmann syndrome is a distinct limb-malformation disorder characterized also by various degrees of limb aplasia/hypoplasia and joint dysplasia.,Disease:Defects in WNT7A are the cause of limb/pelvis-hypoplasia/aplasia syndrome (LPHAS) [MIM:276820]; also called absence of ulna and fibula with severe limb deficiency. LPHAS is a limb-malformation disorder characterized by various degrees of limb aplasia/hypoplasia and joint dysplasia.,Function:Ligand for members of the frizzled family of seven transmembrane receptors. Probable developmental protein. Signaling by Wnt-7a allows sexually dimorphic development of the mullerian ducts.,similarity:Belongs to the Wnt family.,subunit:Interacts with PORCN.,tissue specificity:Expression is restricted to placenta, kidney, testis, uterus, fetal lung, and fetal and adult brain.,		

Validation Data



Western blot analysis of lysates from A431 cells, primary antibody was diluted at 1:1000, 4°over night

Contact information

Orders: order.cn@immunoway.com
Support: support.cn@immunoway.com
Telephone: 400-8787-807(China)
Website: <http://www.immunoway.com.cn>
Address: 2200 Ringwood Ave San Jose, CA 95131 USA



Please scan the QR code
to access additional
product information:
WNT7A Rabbit pAb

For Research Use Only. Not for Use in Diagnostic Procedures.

[Antibody](#) | [ELISA Kits](#) | [Protein](#) | [Reagents](#)