

## SERPH Rabbit pAb

CatalogNo: YN0279

### Key Features

#### Host Species

- Rabbit

#### Reactivity

- Human, Mouse, Rat

#### Applications

- WB, ELISA

#### MW

- 45kD (Observed)

#### Isotype

- IgG

### Recommended Dilution Ratios

WB 1:500-2000

ELISA 1:5000-20000

### Storage

#### Storage\*

-15°C to -25°C/1 year (Do not lower than -25°C)

#### Formulation

Liquid in PBS containing 50% glycerol, 0.5% BSA and 0.02% sodium azide.

### Basic Information

#### Clonality

Polyclonal

### Immunogen Information

#### Immunogen

Synthesized peptide derived from human protein . at AA range: 190-270

#### Specificity

SERPH Polyclonal Antibody detects endogenous levels of protein.

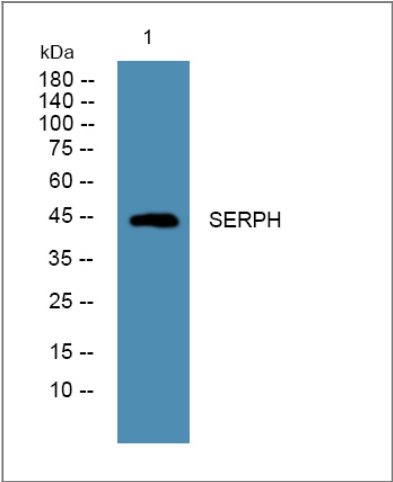
### Target Information

#### Gene name

SERPINH1 CBP1 CBP2 HSP47 SERPINH2 PIG14

<b>Protein Name</b>	Serpine H1 (47 kDa heat shock protein) (Arsenic-transactivated protein 3) (AsTP3) (Cell proliferation-inducing gene 14 protein) (Collagen-binding protein) (Colligin) (Rheumatoid arthritis-related antigen RA-A47)		
	<b>Organism</b>	<b>Gene ID</b>	<b>UniProt ID</b>
	Human	<a href="#">871</a> ;	<a href="#">P50454</a> ;
	Mouse		<a href="#">P19324</a> ;
	Rat		<a href="#">P29457</a> ;
<b>Cellular Localization</b>	Endoplasmic reticulum lumen.		
<b>Tissue specificity</b>	Brain, Cartilage, Fibroblast, Ovary, Periodontal ligament, Skin,		
<b>Function</b>	Function: Binds specifically to collagen. Could be involved as a chaperone in the biosynthetic pathway of collagen., induction: By heat shock., polymorphism: A functional SNP in the promoter of SERPINH1 is associated in African Americans with an increased risk for preterm premature rupture of membranes (PPROM) [MIM:610504]. PPRM is defined as rupture of the membranes before 37 weeks of gestation. SERPINH1 with the -656 T allele displays significantly reduced promoter activity compared to the major -656 C allele. Prematurity is correlated with an increased frequency of the -656 T allele., similarity: Belongs to the serpin family.,		

## Validation Data



Western blot analysis of lysates from DU145 cells, primary antibody was diluted at 1:1000, 4° over night

## Contact information

Orders: order.cn@immunoway.com  
Support: support.cn@immunoway.com  
Telephone: 400-8787-807(China)  
Website: <http://www.immunoway.com.cn>  
Address: 2200 Ringwood Ave San Jose, CA 95131 USA



Please scan the QR code  
to access additional  
product information:  
**SERPH Rabbit pAb**

---

For Research Use Only. Not for Use in Diagnostic Procedures.

[Antibody](#) | [ELISA Kits](#) | [Protein](#) | [Reagents](#)