

MAGC3 Rabbit pAb

CatalogNo: YN0259

Key Features

Host Species

- Rabbit

Reactivity

- Human

Applications

- WB,ELISA

MW

- 70kD (Observed)

Isotype

- IgG

Recommended Dilution Ratios

WB 1:500-2000**ELISA 1:5000-20000**

Storage

Storage*

-15°C to -25°C/1 year(Do not lower than -25°C)

Formulation

Liquid in PBS containing 50% glycerol, 0.5% BSA and 0.02% sodium azide.

Basic Information

Clonality

Polyclonal

Immunogen Information

Immunogen

Synthesized peptide derived from human protein . at AA range: 60-140

Specificity

MAGC3 Polyclonal Antibody detects endogenous levels of protein.

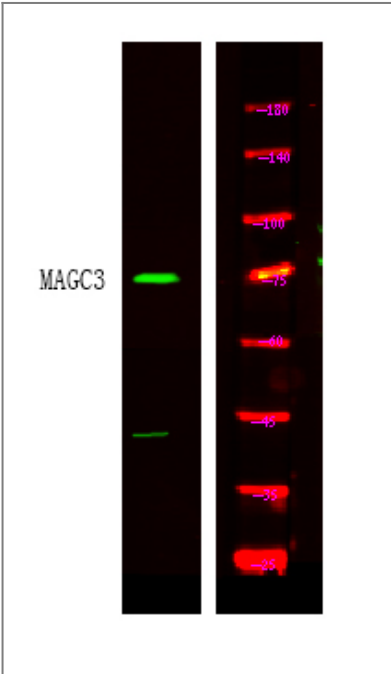
Target Information

Gene name

MAGEC3 HCA2

| | | | |
|---------------------------|---|--------------------------|--------------------------|
| Protein Name | Melanoma-associated antigen C3 (Cancer/testis antigen 7.2) (CT7.2) (Hepatocellular carcinoma-associated antigen 2) (MAGE-C3 antigen) | | |
| | Organism | Gene ID | UniProt ID |
| | Human | 139081 ; | Q8TD91 ; |
| Tissue specificity | Expressed in testis. Not expressed in other normal tissues, but is expressed in tumors of different histological origins. | | |
| Function | similarity:Contains 2 MAGE domains.,tissue specificity:Expressed in testis. Not expressed in other normal tissues, but is expressed in tumors of different histological origins., | | |

| Validation Data



Western Blot analysis of HEK293 lysis, using primary antibody at 1:1000 dilution. Secondary antibody(catalog#:RS23920) was diluted at 1:10000

| Contact information

Orders: order.cn@immunoway.com
 Support: support.cn@immunoway.com
 Telephone: 400-8787-807(China)
 Website: http://www.immunoway.com.cn
 Address: 2200 Ringwood Ave San Jose, CA 95131 USA



Please scan the QR code
 to access additional
 product information:
MAGC3 Rabbit pAb