

INSL5 Rabbit pAb

CatalogNo: YN0234

Key Features

Host Species

- Rabbit

Reactivity

- Human, Mouse

Applications

- WB, ELISA

MW

- 14kD (Observed)

Isotype

- IgG

Recommended Dilution Ratios

WB 1:500-2000

ELISA 1:5000-20000

Storage

Storage*

-15°C to -25°C/1 year (Do not lower than -25°C)

Formulation

Liquid in PBS containing 50% glycerol, 0.5% BSA and 0.02% sodium azide.

Basic Information

Clonality

Polyclonal

Immunogen Information

Immunogen

Synthesized peptide derived from human protein . at AA range: 30-110

Specificity

INSL5 Polyclonal Antibody detects endogenous levels of protein.

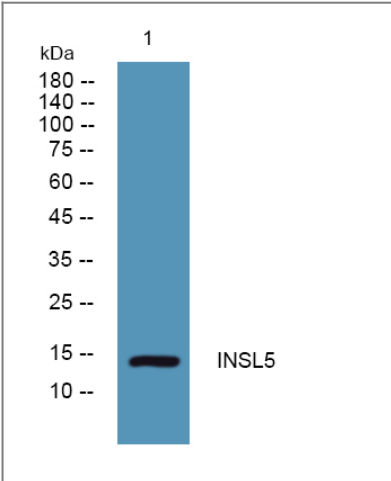
Target Information

Gene name

INSL5 UNQ156/PRO182

Protein Name	Insulin-like peptide INSL5 (Insulin-like peptide 5) [Cleaved into: Insulin-like peptide INSL5 B chain; Insulin-like peptide INSL5 A chain]		
	Organism	Gene ID	UniProt ID
	Human	10022 ;	Q9Y5Q6 ;
	Mouse		Q9WUG6 ;
Cellular Localization	Secreted.		
Tissue specificity	Highly expressed in rectum with lower levels in uterus and ascending and descending colon.		
Function	Function:May have a role in gut contractility or in thymic development and regulation.,similarity:Belongs to the insulin family.,subunit:Heterodimer of a B chain and an A chain linked by two disulfide bonds.,tissue specificity:Highly expressed in rectum with lower levels in uterus and ascending and descending colon.,		

Validation Data



Western blot analysis of lysates from K562 cells, primary antibody was diluted at 1:1000, 4°over night

Contact information

Orders:

order.cn@immunoway.com

Support:

support.cn@immunoway.com

Telephone:

400-8787-807(China)

Website:

http://www.immunoway.com.cn

Address:

2200 Ringwood Ave San Jose, CA 95131 USA



Please scan the QR code to access additional product information:
INSL5 Rabbit pAb