

IFNA7 Rabbit pAb

CatalogNo: YN0222

Key Features

Host Species

- Rabbit

Reactivity

- Human, Mouse

Applications

- WB, ELISA

MW

- 20kD (Observed)

Isotype

- IgG

Recommended Dilution Ratios

WB 1:500-2000

ELISA 1:5000-20000

Storage

Storage* -15°C to -25°C/1 year (Do not lower than -25°C)

Formulation Liquid in PBS containing 50% glycerol, and 0.02% sodium azide.

Basic Information

Clonality Polyclonal

Immunogen Information

Immunogen Synthesized peptide derived from human protein . at AA range: 1-80

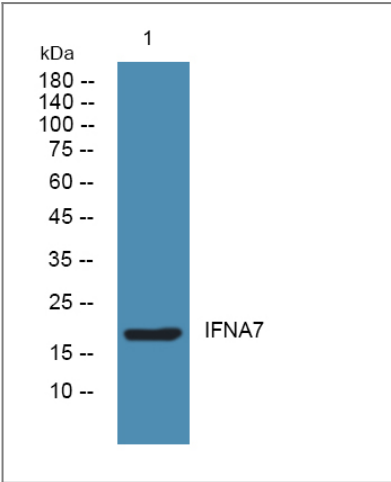
Specificity IFNA7 Polyclonal Antibody detects endogenous levels of protein.

Target Information

Gene name IFNA7

Protein Name	Interferon alpha-7 (IFN-alpha-7) (Interferon alpha-J) (LeIF J) (Interferon alpha-J1) (IFN-alpha-J1)		
	Organism	Gene ID	UniProt ID
	Human	3444;	P01567;
	Mouse		P06799;
Cellular Localization	Secreted.		
Tissue specificity	Brain,PCR rescued clones,		
Function	Function:Produced by macrophages, IFN-alpha have antiviral activities. Interferon stimulates the production of two enzymes: a protein kinase and an oligoadenylate synthetase.,similarity:Belongs to the alpha/beta interferon family.,		

Validation Data



Western blot analysis of lysates from K562 cells, primary antibody was diluted at 1:1000, 4°over night

Contact information

Orders: order.cn@immunoway.com
 Support: support.cn@immunoway.com
 Telephone: 400-8787-807(China)
 Website: <http://www.immunoway.com.cn>
 Address: 2200 Ringwood Ave San Jose, CA 95131 USA



Please scan the QR code to access additional product information:
IFNA7 Rabbit pAb