

## IFNA5 Rabbit pAb

CatalogNo: YN0220

### Key Features

#### Host Species

- Rabbit

#### Reactivity

- Human, Mouse

#### Applications

- WB, ELISA

#### MW

- 20kD (Observed)

#### Isotype

- IgG

### Recommended Dilution Ratios

WB 1:500-2000

ELISA 1:5000-20000

### Storage

#### Storage\*

-15°C to -25°C/1 year (Do not lower than -25°C)

#### Formulation

Liquid in PBS containing 50% glycerol, and 0.02% sodium azide.

### Basic Information

#### Clonality

Polyclonal

### Immunogen Information

#### Immunogen

Synthesized peptide derived from human protein . at AA range: 30-110

#### Specificity

IFNA5 Polyclonal Antibody detects endogenous levels of protein.

### Target Information

#### Gene name

IFNA5

**Protein Name** Interferon alpha-5 (IFN-alpha-5) (Interferon alpha-61) (Interferon alpha-G) (LeIF G)

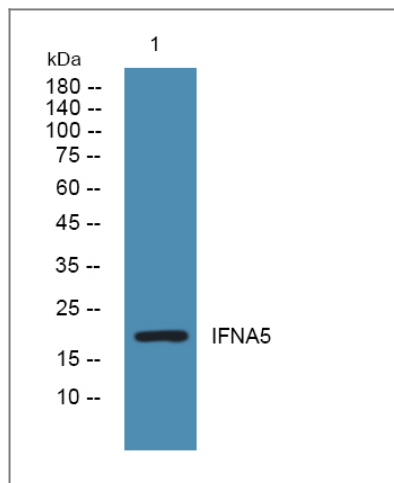
Organism	Gene ID	UniProt ID
Human	<a href="#">3442;</a>	<a href="#">P01569;</a>
Mouse		<a href="#">P07349;</a>

**Cellular Localization** Secreted.

**Tissue specificity** Brain,Spleen,

**Function** Function:Produced by macrophages, IFN-alpha have antiviral activities. Interferon stimulates the production of two enzymes: a protein kinase and an oligoadenylate synthetase.,similarity:Belongs to the alpha/beta interferon family.,

## Validation Data



Western blot analysis of lysates from Jurkat cells, primary antibody was diluted at 1:1000, 4°over night

## Contact information

Orders: order.cn@immunoway.com  
Support: support.cn@immunoway.com  
Telephone: 400-8787-807(China)  
Website: <http://www.immunoway.com.cn>  
Address: 2200 Ringwood Ave San Jose, CA 95131 USA



Please scan the QR code to access additional product information:  
**IFNA5 Rabbit pAb**