

## IFN10 Rabbit pAb

CatalogNo: YN0215

### Key Features

**Host Species**

- Rabbit

**Reactivity**

- Human

**Applications**

- WB,ELISA

**MW**

- 20kD (Observed)

**Isotype**

- IgG

### Recommended Dilution Ratios

**WB 1:500-2000****ELISA 1:5000-20000**

### Storage

**Storage\***

-15°C to -25°C/1 year(Do not lower than -25°C)

**Formulation**

Liquid in PBS containing 50% glycerol, and 0.02% sodium azide.

### Basic Information

**Clonality**

Polyclonal

### Immunogen Information

**Immunogen**

Synthesized peptide derived from human protein . at AA range: 30-110

**Specificity**

IFN10 Polyclonal Antibody detects endogenous levels of protein.

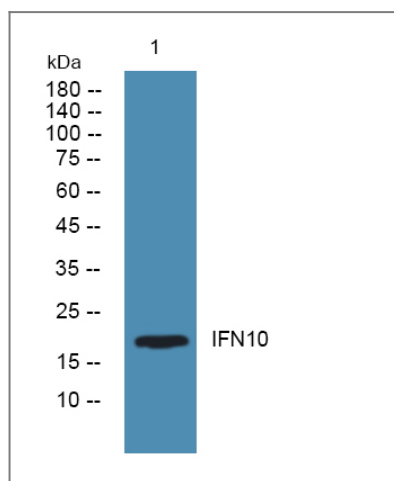
### Target Information

**Gene name**

IFNA10

<b>Protein Name</b>	Interferon alpha-10 (IFN-alpha-10) (Interferon alpha-6L) (Interferon alpha-C) (LeIF C)		
	<b>Organism</b>	<b>Gene ID</b>	<b>UniProt ID</b>
	Human	<a href="#">3446;</a>	<a href="#">P01566;</a>
<b>Cellular Localization</b>	Secreted.		
<b>Tissue specificity</b>	PCR rescued clones,		
<b>Function</b>	Function:Produced by macrophages, IFN-alpha have antiviral activities. Interferon stimulates the production of two enzymes: a protein kinase and an oligoadenylate synthetase.,similarity:Belongs to the alpha/beta interferon family.,		

## Validation Data



Western blot analysis of lysates from HCT116 cells, primary antibody was diluted at 1:1000, 4° over night

## Contact information

Orders: [order.cn@immunoway.com](mailto:order.cn@immunoway.com)  
 Support: [support.cn@immunoway.com](mailto:support.cn@immunoway.com)  
 Telephone: 400-8787-807(China)  
 Website: <http://www.immunoway.com.cn>  
 Address: 2200 Ringwood Ave San Jose, CA 95131 USA



Please scan the QR code to access additional product information:  
**IFN10 Rabbit pAb**

For Research Use Only. Not for Use in Diagnostic Procedures.

[Antibody](#) | [ELISA Kits](#) | [Protein](#) | [Reagents](#)