

FGF21 Rabbit pAb

CatalogNo: YN0199

Key Features

Host Species

- Rabbit

Reactivity

- Human, Mouse

Applications

- WB, ELISA

MW

- 22kD (Observed)

Isotype

- IgG

Recommended Dilution Ratios

WB 1:500-2000

ELISA 1:5000-20000

Storage

Storage*

-15°C to -25°C/1 year (Do not lower than -25°C)

Formulation

Liquid in PBS containing 50% glycerol, 0.5% BSA and 0.02% sodium azide.

Basic Information

Clonality

Polyclonal

Immunogen Information

Immunogen

Synthesized peptide derived from human protein . at AA range: 90-170

Specificity

FGF21 Polyclonal Antibody detects endogenous levels of protein.

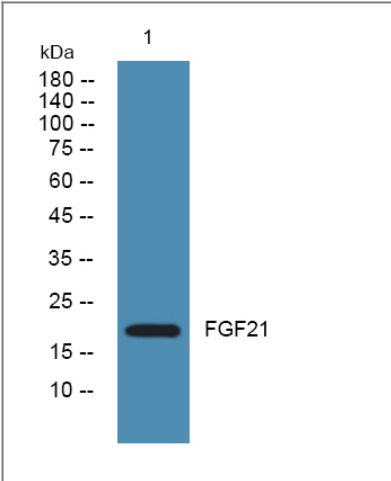
Target Information

Gene name

FGF21 UNQ3115/PRO10196

Protein Name	Fibroblast growth factor 21 (FGF-21)		
	Organism	Gene ID	UniProt ID
	Human	26291 ;	Q9NSA1 ;
	Mouse		Q9JJN1 ;
Cellular Localization	Secreted .		
Tissue specificity	Lung,		
Function	Function:Stimulates glucose uptake in differentiated adipocytes via the induction of glucose transporter SLC2A1/GLUT1, but not SLC2A4/GLUT4, expression.,similarity:Belongs to the heparin-binding growth factors family.,		

Validation Data



Western blot analysis of lysates from KB cells, primary antibody was diluted at 1:1000, 4°over night

Contact information

Orders: order.cn@immunoway.com
 Support: support.cn@immunoway.com
 Telephone: 400-8787-807(China)
 Website: <http://www.immunoway.com.cn>
 Address: 2200 Ringwood Ave San Jose, CA 95131 USA



Please scan the QR code
 to access additional
 product information:
FGF21 Rabbit pAb