

ABC3C Rabbit pAb

CatalogNo: YN0149

Key Features

Host Species

- Rabbit

Reactivity

- Human

Applications

- WB,ELISA

MW

- 20kD (Observed)

Isotype

- IgG

Recommended Dilution Ratios

WB 1:500-2000

ELISA 1:5000-20000

Storage

Storage*

-15°C to -25°C/1 year(Do not lower than -25°C)

Formulation

Liquid in PBS containing 50% glycerol, 0.5% BSA and 0.02% sodium azide.

Basic Information

Clonality

Polyclonal

Immunogen Information

Immunogen

Synthesized peptide derived from human protein . at AA range: 10-90

Specificity

ABC3C Polyclonal Antibody detects endogenous levels of protein.

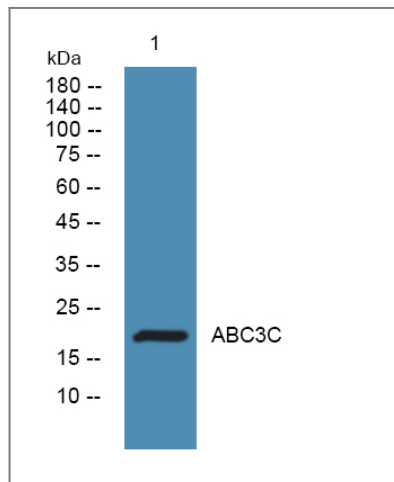
Target Information

Gene name

APOBEC3C APOBEC1L PBI

Protein Name	Probable DNA dC->dU-editing enzyme APOBEC-3C (APOBEC1-like) (Phorbolin I)		
	Organism	Gene ID	UniProt ID
	Human	27350;	Q9NRW3;
Cellular Localization	Nucleus . Cytoplasm .		
Tissue specificity	Expressed in spleen, testes, peripheral blood lymphocytes, heart, thymus, prostate and ovary.		
Function	cofactor:Zinc.,Function:Unknown. Unable to reduce HIV-1 infectivity in vitro.,miscellaneous:It is one of seven related genes or pseudogenes found in a cluster, thought to result from gene duplication, on chromosome 22.,similarity:Belongs to the cytidine and deoxycytidylate deaminase family.,tissue specificity:Expressed in spleen, testes, peripheral blood lymphocytes, heart, thymus, prostate and ovary.,		

Validation Data



Western blot analysis of lysates from K562 cells, primary antibody was diluted at 1:1000, 4° over night

Contact information

Orders: order.cn@immunoway.com
 Support: support.cn@immunoway.com
 Telephone: 400-8787-807(China)
 Website: <http://www.immunoway.com.cn>
 Address: 2200 Ringwood Ave San Jose, CA 95131 USA



Please scan the QR code to access additional product information:
ABC3C Rabbit pAb