

DUS14 Rabbit pAb

CatalogNo: YN0086

Key Features

Host Species

- Rabbit

Reactivity

- Human, Mouse

Applications

- WB, ELISA

MW

- 21kD (Observed)

Isotype

- IgG

Recommended Dilution Ratios

WB 1:500-2000

ELISA 1:5000-20000

Storage

Storage*

-15°C to -25°C/1 year (Do not lower than -25°C)

Formulation

Liquid in PBS containing 50% glycerol, and 0.02% sodium azide.

Basic Information

Clonality

Polyclonal

Immunogen Information

Immunogen

Synthesized peptide derived from human protein . at AA range: 120-200

Specificity

DUS14 Polyclonal Antibody detects endogenous levels of protein.

Target Information

Gene name

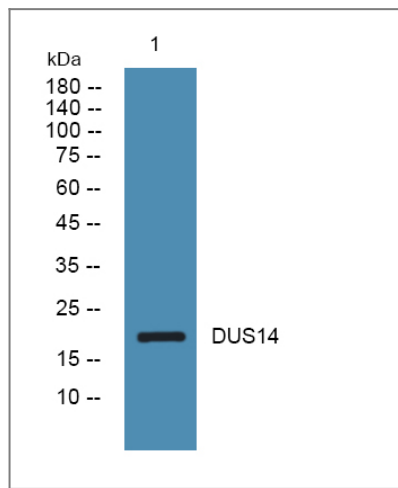
DUSP14 MKP6

Protein Name	Dual specificity protein phosphatase 14 (MKP-1-like protein tyrosine phosphatase) (MKP-L) (Mitogen-activated protein kinase phosphatase 6) (MAP kinase phosphatase 6) (MKP-6)		
	Organism	Gene ID	UniProt ID
	Human	11072 ;	Q95147 ;
	Mouse		Q9JLY7 ;

Tissue specificity Lung,

Function Catalytic activity:A phosphoprotein + H(2)O = a protein + phosphate.,Catalytic activity:Protein tyrosine phosphate + H(2)O = protein tyrosine + phosphate.,Function:Involved in the inactivation of MAP kinases. Dephosphorylates ERK, JNK and p38 MAP-kinases.,similarity:Belongs to the protein-tyrosine phosphatase family. Non-receptor class dual specificity subfamily.,similarity:Contains 1 tyrosine-protein phosphatase domain.,subunit:Interacts with CD28.,

Validation Data



Western blot analysis of lysates from DU145 cells, primary antibody was diluted at 1:1000, 4°over night

Contact information

Orders: order.cn@immunoway.com
Support: support.cn@immunoway.com
Telephone: 400-8787-807(China)
Website: <http://www.immunoway.com.cn>
Address: 2200 Ringwood Ave San Jose, CA 95131 USA



Please scan the QR code to access additional product information:
DUS14 Rabbit pAb