

Calpain 1 (PT1874R) PT™ Rabbit mAb

CatalogNo: YM960127 **Recombinant** 

Key Features

Host Species

- Rabbit

Reactivity

- Human, Mouse, Rat

Applications

- WB, IHC, IF, ELISA

MW

- 82kD (Calculated)
75kD (Observed)

Isotype

- IgG, Kappa

Storage

Storage* -15°C to -25°C/1 year (Do not lower than -25°C)

Formulation PBS, 50% glycerol, 0.05% Proclin 300, 0.05% BSA

Recommended Dilution Ratios

IHC 1:200-1:1000

WB 1:500-1:2000

IF 1:200-1:1000

ELISA 1:5000-1:20000

Basic Information

Clonality Monoclonal

Clone Number PT1874R

Immunogen Information

Immunogen The specific immunogen used to produce this antibody is proprietary information.

Specificity Endogenous

Target Information

Gene name CAPN1 CANPL1 PIG30

Protein Name Calpain-1 catalytic subunit (Calcium-activated neutral proteinase 1) (CANP 1) (Calpain mu-type) (Calpain-1 large subunit) (Cell proliferation-inducing gene 30 protein) (Micromolar-calpain) (muCANP)

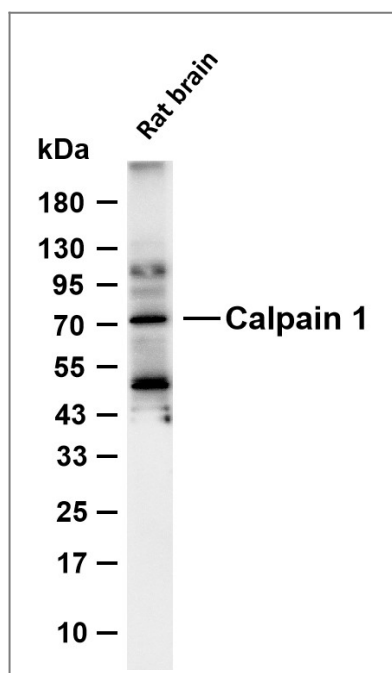
Organism	Gene ID	UniProt ID
Human	823 ;	P07384 ;
Mouse		O35350 ;
Rat		P97571 ;

Cellular Localization Cytoplasm . Cell membrane . Translocates to the plasma membrane upon Ca (2+) binding. In granular keratinocytes and in lower corneocytes , colocalizes with FLG and FLG2 (PubMed:21531719) . .

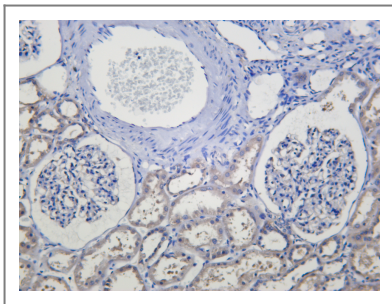
Tissue specificity Ubiquitous.

Function Catalytic activity:Broad endopeptidase specificity. ,cofactor:Binds 3 calcium ions. ,enzyme regulation:Activated by micromolar concentrations of calcium and inhibited by calpastatin. ,Function:Calcium-regulated non-lysosomal thiol-protease which catalyze limited proteolysis of substrates involved in cytoskeletal remodeling and signal transduction. ,online information:Calpain ,similarity:Belongs to the peptidase C2 family. ,similarity:Contains 1 calpain catalytic domain. ,similarity:Contains 4 EF-hand domains. ,subcellular location:Translocates to the plasma membrane upon Ca (2+) binding. ,subunit:Forms a heterodimer with a small (regulatory) subunit (CAPNS1) . ,tissue specificity:Ubiquitous. ,

Validation Data



Various whole cell lysates were separated by 4-20% SDS-PAGE, and the membrane was blotted with anti-Calpain 1 (PT1874R) antibody. The HRP-conjugated Goat anti-Rabbit IgG (H + L) antibody was used to detect the antibody. Lane 1: Rat brain Predicted band size: 82kDa Observed band size: 75kDa



Human kidney was stained with anti-Calpain 1 (PT1874R) Rabbit antibody

| Contact information

Orders: order.cn@immunoway.com
Support: support.cn@immunoway.com
Telephone: 400-8787-807(China)
Website: <http://www.immunoway.com.cn>
Address: 2200 Ringwood Ave San Jose, CA 95131 USA



Please scan the QR code
to access additional
product information:
Calpain 1 (PT1874R)
PT™ Rabbit mAb

For Research Use Only. Not for Use in Diagnostic Procedures.

[Antibody](#) | [ELISA Kits](#) | [Protein](#) | [Reagents](#)