

PTGES2 (PT1888R) PT™ Rabbit mAb

CatalogNo: YM960103 **Recombinant** 

Key Features

Host Species

- Rabbit

Reactivity

- Human, Mouse, Rat

Applications

- WB, IHC, IF, ELISA

MW

- 42kD (Calculated)
30kD (Observed)

Isotype

- IgG, Kappa

Storage

Storage* -15°C to -25°C/1 year (Do not lower than -25°C)

Formulation PBS, 50% glycerol, 0.05% Proclin 300, 0.05% BSA

Recommended Dilution Ratios

IHC 1:200-1:1000

WB 1:2000-1:10000

IF 1:200-1:1000

ELISA 1:5000-1:20000

Basic Information

Clonality Monoclonal

Clone Number PT1888R

Immunogen Information

Immunogen The specific immunogen used to produce this antibody is proprietary information.

Specificity Endogenous

Target Information

Gene name PTGES2 C9orf15 PGES2

Protein Name Prostaglandin E synthase 2 (Microsomal prostaglandin E synthase 2) (mPGES-2) [Cleaved into: Prostaglandin E synthase 2 truncated form]

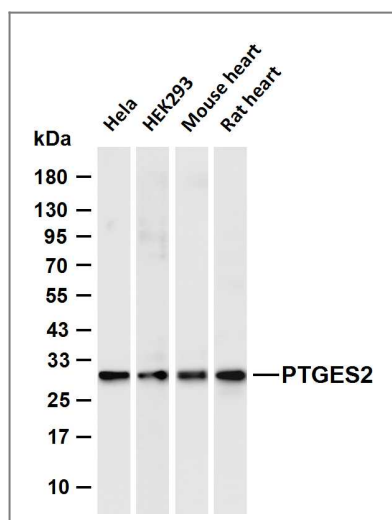
Organism	Gene ID	UniProt ID
Human	80142 ;	Q9H7Z7 ;
Mouse	96979 ;	Q8BWM0 ;

Cellular Localization Golgi apparatus membrane ; Single-pass membrane protein . ; [Prostaglandin E synthase 2 truncated form]: Cytoplasm , perinuclear region . Synthesized as a Golgi membrane-bound protein , which is further cleaved into the predominant soluble truncated form. The truncated form is cytoplasmic and is enriched in the perinuclear region. .

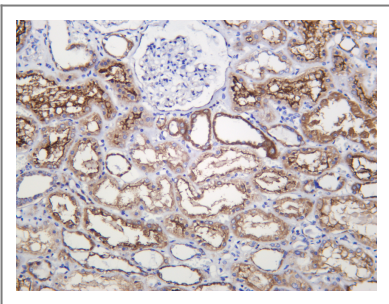
Tissue specificity Widely expressed. Expressed in the heart , including apex , inter-ventricular septum , both atria and ventricles , but not in the aorta. Also expressed in fetal heart. Detected in various regions of the brain: cerebellum; occipital , frontal and parietal lobes. Also expressed in the lymph nodes , skeletal muscle , kidney and trachea , but not in the thymus or lung. Overexpressed in colorectal cancer.

Function Isomerase that catalyzes the conversion of PGH₂ into the more stable prostaglandin E₂ (PGE₂) (in vitro) . The biological function and the GSH-dependent property of PTGES2 is still under debate . In vivo , PTGES2 could form a complex with GSH and heme and would not participate in PGE₂ synthesis but would catalyze the degradation of prostaglandin E₂ H₂ (PGH₂) to 12 (S) -hydroxy-5 (Z) ,8 (E) ,10 (E) -heptadecatrienoic acid (HHT) and malondialdehyde (MDA) (By similarity) .

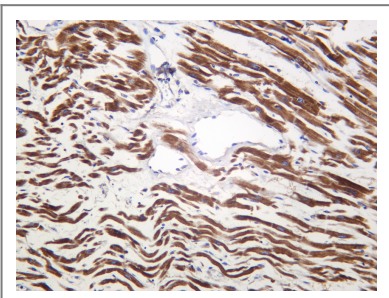
Validation Data



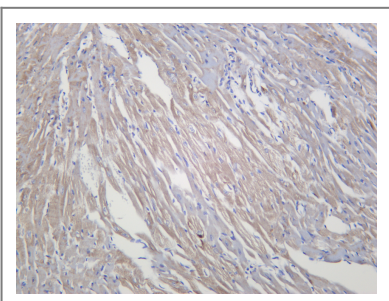
Various whole cell lysates were separated by 4-20% SDS-PAGE, and the membrane was blotted with anti-PTGES2 (PT1888R) antibody. The HRP-conjugated Goat anti-Rabbit IgG (H + L) antibody was used to detect the antibody. Lane 1: HeLa Lane 2: HEK293 Lane 3: Mouse heart Lane 4: Rat heart Predicted band size: 42kDa Observed band size: 30kDa



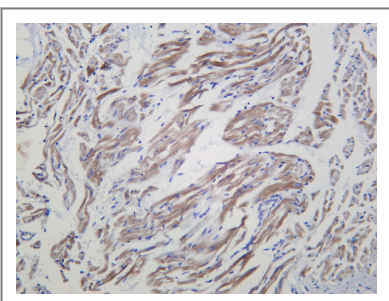
Human kidney was stained with anti-PTGES2 (PT1888R) Rabbit antibody



Human heart muscle was stained with anti-PTGES2 (PT1888R) Rabbit antibody



Mouse heart muscle was stained with anti-PTGES2 (PT1888R) Rabbit antibody



Rat heart muscle was stained with anti-PTGES2 (PT1888R) Rabbit antibody

| Contact information

Orders: order.cn@immunoway.com
Support: support.cn@immunoway.com
Telephone: 400-8787-807(China)
Website: <http://www.immunoway.com.cn>
Address: 2200 Ringwood Ave San Jose, CA 95131 USA



Please scan the QR code to access additional product information:
PTGES2 (PT1888R)
PT™ Rabbit mAb