

ALY (PT1762R) PT™ Rabbit mAb

CatalogNo: YM960005 **Recombinant** 

Key Features

Host Species

- Rabbit

Reactivity

- Human, Mouse, Rat

Applications

- WB, IHC, IF, IP, ELISA

MW

- 27kD (Calculated)
32kD (Observed)

Isotype

- IgG, Kappa

Storage

Storage* -15°C to -25°C/1 year (Do not lower than -25°C)

Formulation PBS, 50% glycerol, 0.05% Proclin 300, 0.05% BSA

Recommended Dilution Ratios

IHC 1:200-1:500

WB 1:500-1:2000

IF 1:200-1:1000

ELISA 1:5000-1:20000

IP 1:50-1:200

Basic Information

Clonality Monoclonal

Clone Number PT1762R

Immunogen Information

Specificity Endogenous

| Target Information

Gene name ALYREF

Protein Name THO complex subunit 4

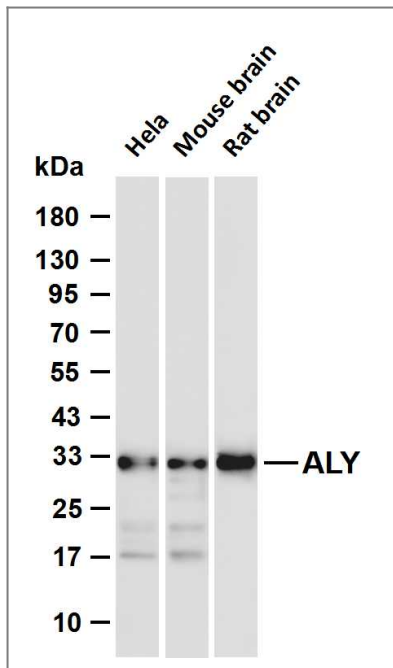
Organism	Gene ID	UniProt ID
Human	10189 ;	Q86V81 ;
Mouse	21681 ;	O08583 ;

Cellular Localization Nucleus . Nucleus speckle . Cytoplasm . Colocalizes with the core EJC, ALYREF/THOC4, NXF1 and DDX39B in the nucleus and nuclear speckles. Travels to the cytoplasm as part of the exon junction complex (EJC) bound to mRNA (PubMed:19324961). Localizes to regions surrounding nuclear speckles known as perispeckles in which TREX complex assembly seems to occur (PubMed:23826332). .

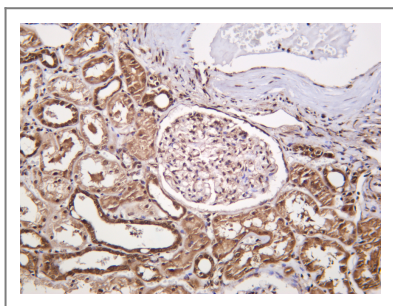
Tissue specificity Expressed in a wide variety of cancer types.

Function Disease:Antibodies against THOC4 are found in sera of patients with systemic lupus erythematosus (SLE).,Function:Acts as chaperone and promotes the dimerization of transcription factors containing basic leucine zipper (bZIP) domains and thereby promotes transcriptional activation. Plays a role in mRNA processing and export. May function as scaffold that mediates interactions between proteins and/or RNA. Integral part of the THO/TREX complex that is recruited to transcribed genes and travels with the RNA polymerase during elongation. Is part of the exon junction complex that remains associated with spliced mRNA and plays an important role in mRNA export and nonsense-mediated RNA decay. Directs mRNA derived from Herpes simplex virus intron-less genes to the NXF1-mediated export pathway.,PTM:Arg-50 and Arg-204 are dimethylated, probably to asymmetric dimethylarginine.,PTM:Phosphorylated upon DNA damage, probably by ATM or ATR.,similarity:Contains 1 RRM (RNA recognition motif) domain.,subcellular location:Travels to the cytoplasm as part of the exon junction complex (EJC) bound to mRNA.,subunit:Homomultimer. Binds LEF1 and RUNX1 (By similarity). Is part of several complexes involved in mRNA processing and export. Part of the heteromultimeric THO/TREX complex containing THOC1, THOC2, THOC3, THOC4 and UAP56. Associates with the spliceosome. Binds NXF1 and RBM8A directly and is part of the exon junction complex (EJC) containing NCBP1, NCBP2, RBM8A, SRRM1, NXF1, RENT2, RENT3B and THOC4 (By similarity). Found in a mRNA splicing-dependent exon junction complex (EJC) with DEK, RBM8A, RNPS1, SRRM1 and THOC4. Binds UL54 from Herpes simplex type 1 (strain KOS). Found in a mRNP complex with RENT3A and RENT3B. Interacts with BAT1, RBM8A, RNPS1 and SRRM1. Identified in the spliceosome C complex, at least composed of AQR, ASCC3L1, C19orf29, CDC40, CDC5L, CRNKL1, DDX23, DDX41, DDX48, DDX5, DGCR14, DHX35, DHX38, DHX8, EFTUD2, FRG1, GPATC1, HNRPA1, HNRPA2B1, HNRPA3, HNRPC, HNRPF, HNRPH1, HNRPK, HNRPM, HNRPR, HNRPU, KIAA1160, KIAA1604, LSM2, LSM3, MAGOH, MORG1, PABPC1, PLRG1, PNN, PPIE, PPIL1, PPIL3, PPWD1, PRPF19, PRPF4B, PRPF6, PRPF8, RALY, RBM22, RBM8A, RBMX, SART1, SF3A1, SF3A2, SF3A3, SF3B1, SF3B2, SF3B3, SFRS1, SKIV2L2, SNRPA1, SNRPB, SNRPB2, SNRPD1, SNRPD2, SNRPD3, SNRPE, SNRPF, SNRPG, SNW1, SRRM1, SRRM2, SYF2, SYNCRIP, TFIP11, THOC4, U2AF1, WDR57, XAB2 and ZCCHC8.,

| Validation Data



Various whole cell lysates were separated by 4-20% SDS-PAGE, and the membrane was blotted with anti-ALY (PT1762R) antibody. The HRP-conjugated Goat anti-Rabbit IgG (H + L) antibody was used to detect the antibody. Lane 1: HeLa Lane 2: Mouse brain Lane 3: Rat brain Predicted band size: 27kDa Observed band size: 32kDa



Human kidney was stained with anti-ALY (PT1762R) Rabbit antibody

Contact information

Orders: order.cn@immunoway.com
 Support: support.cn@immunoway.com
 Telephone: 400-8787-807(China)
 Website: <http://www.immunoway.com.cn>
 Address: 2200 Ringwood Ave San Jose, CA 95131 USA



Please scan the QR code to access additional product information:
ALY (PT1762R) PT™
Rabbit mAb

For Research Use Only. Not for Use in Diagnostic Procedures.

[Antibody](#) | [ELISA Kits](#) | [Protein](#) | [Reagents](#)