

## MKP-2 (PT1722R) PT™ Rabbit mAb

CatalogNo: YM9564 **Recombinant** 

### Key Features

#### Host Species

- Rabbit

#### Reactivity

- Human, Mouse, Rat

#### Applications

- WB, IF, IP, ELISA

#### MW

- 43kD (Calculated)
- 40kD (Observed)

#### Isotype

- IgG, Kappa

### Storage

**Storage\*** -15°C to -25°C/1 year (Do not lower than -25°C)**Formulation** PBS, 50% glycerol, 0.05% Proclin 300, 0.05% BSA

### Recommended Dilution Ratios

**WB 1:2000-1:10000****IF 1:200-1:1000****ELISA 1:5000-1:20000****IP 1:50-1:200**

### Basic Information

**Clonality** Monoclonal**Clone Number** PT1722R

### Immunogen Information

**Specificity** Endogenous

## Target Information

**Gene name** DUSP4

**Protein Name** Dual specificity protein phosphatase 4

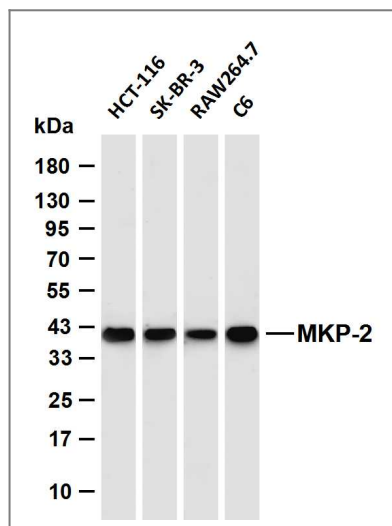
Organism	Gene ID	UniProt ID
Human	<a href="#">1846;</a>	<a href="#">Q13115;</a>
Mouse	<a href="#">319520;</a>	<a href="#">Q8BFV3;</a>
Rat	<a href="#">60587;</a>	<a href="#">Q62767;</a>

**Cellular Localization** Nucleus .

**Tissue specificity** Skin,Uterus,

**Function** Catalytic activity:A phosphoprotein + H(2)O = a protein + phosphate.,Catalytic activity:Protein tyrosine phosphate + H(2)O = protein tyrosine + phosphate.,Function:Regulates mitogenic signal transduction by dephosphorylating both Thr and Tyr residues on MAP kinases ERK1 and ERK2.,similarity:Belongs to the protein-tyrosine phosphatase family. Non-receptor class dual specificity subfamily.,similarity:Contains 1 rhodanese domain.,similarity:Contains 1 tyrosine-protein phosphatase domain.,

## Validation Data



Various whole cell lysates were separated by 4-20% SDS-PAGE, and the membrane was blotted with anti-MKP-2 (PT1722R) antibody. The HRP-conjugated Goat anti-Rabbit IgG (H + L) antibody was used to detect the antibody. Lane 1: HCT-116 Lane 2: SK-BR-3 Lane 3: RAW264.7 Lane 4: C6 Predicted band size: 43kDa Observed band size: 40kDa

## Contact information

Orders: order.cn@immunoway.com  
Support: support.cn@immunoway.com  
Telephone: 400-8787-807(China)  
Website: http://www.immunoway.com.cn  
Address: 2200 Ringwood Ave San Jose, CA 95131 USA



Please scan the QR code  
to access additional  
product information:  
**MKP-2 (PT1722R)**  
**PT™ Rabbit mAb**

---

For Research Use Only. Not for Use in Diagnostic Procedures.

[Antibody](#) | [ELISA Kits](#) | [Protein](#) | [Reagents](#)