

# Haptoglobin (PT1715R) PT™ Rabbit mAb

CatalogNo: YM9557 **Recombinant** 

## Key Features

### Host Species

- Rabbit

### Reactivity

- Human, Mouse, Rat

### Applications

- WB, IHC, IF, ELISA

### MW

- 39kD (Calculated)  
39kD (Observed)

### Isotype

- IgG, Kappa

## Storage

**Storage\*** -15°C to -25°C/1 year (Do not lower than -25°C)

**Formulation** PBS, 50% glycerol, 0.05% Proclin 300, 0.05% BSA

## Recommended Dilution Ratios

**IHC 1:200-1:1000**

**WB 1:2000-1:10000**

**IF 1:200-1:1000**

**ELISA 1:5000-1:20000**

## Basic Information

**Clonality** Monoclonal

**Clone Number** PT1715R

## Immunogen Information

**Specificity** Endogenous

## Target Information

**Gene name** HP

**Protein Name** Haptoglobin (Zonulin) [Cleaved into: Haptoglobin alpha chain; Haptoglobin beta chain]

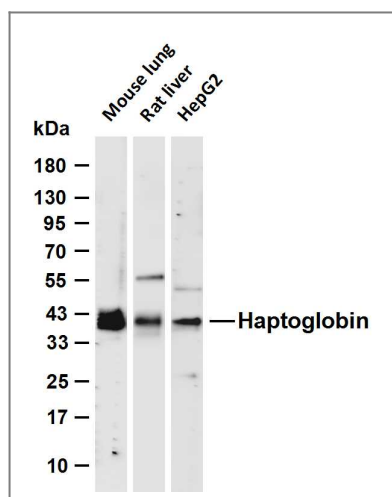
Organism	Gene ID	UniProt ID
Human	<a href="#">3240</a> ;	<a href="#">P00738</a> ;
Mouse	<a href="#">15439</a> ;	<a href="#">Q61646</a> ;

**Cellular Localization** Secreted.

**Tissue specificity** Expressed by the liver and secreted in plasma.

**Function** Caution:Although homologous to serine proteases, it has lost all essential catalytic residues and has no enzymatic activity.,Function:Haptoglobin combines with free plasma hemoglobin, preventing loss of iron through the kidneys and protecting the kidneys from damage by hemoglobin, while making the hemoglobin accessible to degradative enzymes.,online information:Haptoglobin entry,online information:The Singapore human mutation and polymorphism database,polymorphism:In the human populations there are two major allelic forms, alpha-1 with 83 residues and alpha-2 with 142 residues. These alleles determine the 3 major phenotypes HP\*1F/HP\*1S and HP\*2FS. The two main alleles of HP\*1 are called HP\*1F (fast) and HP\*1S (slow).,similarity:Belongs to the peptidase S1 family.,similarity:Contains 1 peptidase S1 domain.,similarity:Contains 1 Sushi (CCP/SCR) domain.,similarity:Contains 2 Sushi (CCP/SCR) domains.,subunit:Tetramer of two alpha and two beta chains.,tissue specificity:Expressed by the liver and secreted in plasma.,tissue specificity:In adult liver the amount of HPR mRNA is at the lower limit of detection, therefore the extent of its expression is at most less than 1000-fold that of the HP1F gene. No HPR mRNA can be detected in fetal liver. Expressed in hepatoma G2 and leukemia molt-4 cell lines.,

## Validation Data



Various whole cell lysates were separated by 4-20% SDS-PAGE, and the membrane was blotted with anti-Haptoglobin (PT1715R) antibody. The HRP-conjugated Goat anti-Rabbit IgG (H + L) antibody was used to detect the antibody. Lane 1: Mouse lung Lane 2: Rat liver Lane 3: HepG2 Predicted band size: 39kDa Observed band size: 39kDa

## Contact information

Orders: order.cn@immunoway.com  
Support: support.cn@immunoway.com  
Telephone: 400-8787-807(China)  
Website: <http://www.immunoway.com.cn>  
Address: 2200 Ringwood Ave San Jose, CA 95131 USA



Please scan the QR code to access additional product information:  
**Haptoglobin (PT1715R) PT™ Rabbit mAb**

---

For Research Use Only. Not for Use in Diagnostic Procedures.

[Antibody](#) | [ELISA Kits](#) | [Protein](#) | [Reagents](#)