

## SIRP- $\alpha$ 1 (PT1643R) PT™ Rabbit mAb

CatalogNo: YM9485 **Recombinant** 

### Key Features

#### Host Species

- Rabbit

#### Reactivity

- Human, Mouse, Rat

#### Applications

- WB, IHC, IF, ELISA

#### MW

- 55kD (Calculated)  
85kD (Observed)

#### Isotype

- IgG, Kappa

### Storage

**Storage\*** -15°C to -25°C/1 year (Do not lower than -25°C)

**Formulation** PBS, 50% glycerol, 0.05% Proclin 300, 0.05% BSA

### Recommended Dilution Ratios

**IHC 1:200-1:1000**

**WB 1:2000-1:10000**

**IF 1:200-1:1000**

**ELISA 1:5000-1:20000**

### Basic Information

**Clonality** Monoclonal

**Clone Number** PT1643R

### Immunogen Information

**Specificity** Endogenous

---

## | Target Information

**Gene name** SIRPA

**Protein Name** Tyrosine-protein phosphatase non-receptor type substrate 1

Organism	Gene ID	UniProt ID
Human	<a href="#">140885</a> ;	<a href="#">P78324</a> ;
Mouse	<a href="#">19261</a> ;	<a href="#">P97797</a> ;
Rat	<a href="#">25528</a> ;	<a href="#">P97710</a> ;

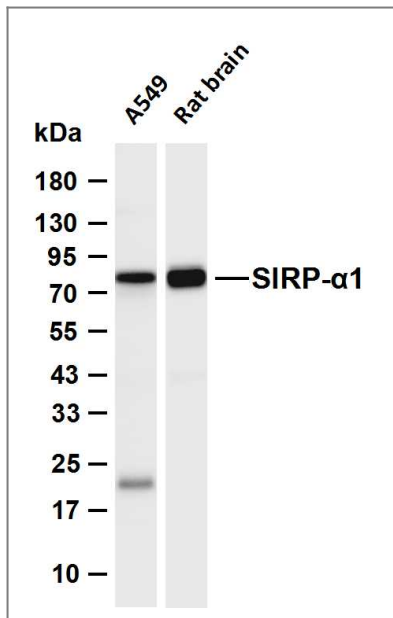
**Cellular Localization** Membrane; Single-pass type I membrane protein.

**Tissue specificity** Ubiquitous. Highly expressed in brain. Detected on myeloid cells, but not T-cells. Detected at lower levels in heart, placenta, lung, testis, ovary, colon, liver, small intestine, prostate, spleen, kidney, skeletal muscle and pancreas.

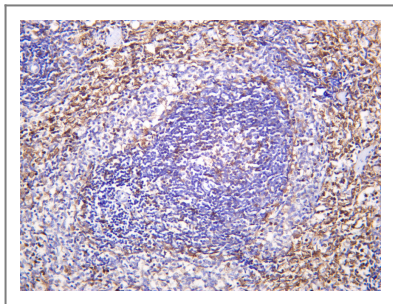
**Function** Function:Immunoglobulin-like cell surface receptor for CD47. Acts as docking protein and induces translocation of PTPN6, PTPN11 and other binding partners from the cytosol to the plasma membrane. Supports adhesion of cerebellar neurons, neurite outgrowth and glial cell attachment. May play a key role in intracellular signaling during synaptogenesis and in synaptic function (By similarity). Involved in the negative regulation of receptor tyrosine kinase-coupled cellular responses induced by cell adhesion, growth factors or insulin. Mediates negative regulation of phagocytosis, mast cell activation and dendritic cell activation. CD47 binding prevents maturation of immature dendritic cells and inhibits cytokine production by mature dendritic cells.,PTM:N-glycosylated.,PTM:Phosphorylated on tyrosine residues in response to stimulation with EGF, growth hormone, insulin and PDGF. Dephosphorylated by PTPN11.,similarity:Contains 1 Ig-like V-type (immunoglobulin-like) domain.,similarity:Contains 2 Ig-like C1-type (immunoglobulin-like) domains.,subunit:Binds PTPN11 when tyrosine-phosphorylated, except in macrophages, where it primarily binds PTPN6. Binds GRB2 in vitro. Binds FGR (By similarity). Binds JAK2 irrespective of its phosphorylation status and forms a stable complex. Binds SCAP1 and/or SCAP2. The resulting complex recruits FYB. Binds PTK2B.,tissue specificity:Ubiquitous. Highly expressed in brain. Detected on myeloid cells, but not T-cells. Detected at lower levels in heart, placenta, lung, testis, ovary, colon, liver, small intestine, prostate, spleen, kidney, skeletal muscle and pancreas.,

---

## | Validation Data



Various whole cell lysates were separated by 4-20% SDS-PAGE, and the membrane was blotted with anti-SIRP- $\alpha$ 1 (PT1643R) antibody. The HRP-conjugated Goat anti-Rabbit IgG (H + L) antibody was used to detect the antibody. Lane 1: A549 Lane 2: Rat brain Predicted band size: 55kDa Observed band size: 85kDa



Rat spleen was stained with anti-SIRP- $\alpha$ 1 (PT1643R) Rabbit antibody

## Contact information

Orders: [order.cn@immunoway.com](mailto:order.cn@immunoway.com)  
 Support: [support.cn@immunoway.com](mailto:support.cn@immunoway.com)  
 Telephone: 400-8787-807(China)  
 Website: <http://www.immunoway.com.cn>  
 Address: 2200 Ringwood Ave San Jose, CA 95131 USA



Please scan the QR code to access additional product information:  
**SIRP- $\alpha$ 1 (PT1643R)**  
**PT™ Rabbit mAb**

For Research Use Only. Not for Use in Diagnostic Procedures.

[Antibody](#) | [ELISA Kits](#) | [Protein](#) | [Reagents](#)