

PLC β 3 (Phospho Ser537) (PT1500R) PT™ Rabbit mAb

CatalogNo: YM9342 **Recombinant** 

Key Features

Host Species

- Rabbit

Reactivity

- Human

Applications

- WB,IF,ELISA

MW

- 139kD (Calculated)
150kD (Observed)

Isotype

- IgG,Kappa

Storage

Storage* -15°C to -25°C/1 year(Do not lower than -25°C)

Formulation PBS, 50% glycerol, 0.05% Proclin 300, 0.05%BSA

Recommended Dilution Ratios

WB 1:2000-1:10000

IF 1:200-1:1000

ELISA 1:5000-1:20000

Basic Information

Clonality Monoclonal

Clone Number PT1500R

Immunogen Information

Specificity PLC β 3 (Phospho Ser537) Antibody detects endogenous levels of PLC β 3 protein only when phosphorylated at S537. The name of modified sites may be influenced by many factors, such as species (the modified site was not originally found in human samples) and the change of protein sequence (the previous protein sequence is incomplete, and the protein sequence may be prolonged with the development of protein sequencing technology). When naming, we will use the "numbers" in historical reference to keep the sites consistent with the reports. The antibody binds to the following modification sequence (lowercase letters are modification sites):QKsLG

Target Information

Gene name PLCB3

Protein Name 1-phosphatidylinositol 4,5-bisphosphate phosphodiesterase beta-3

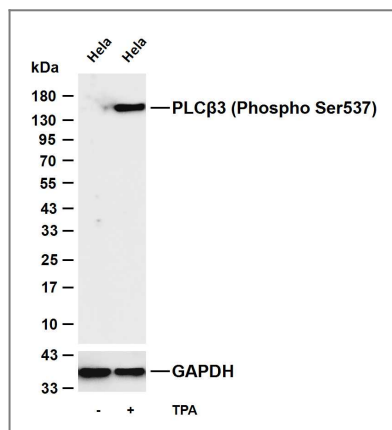
Organism	Gene ID	UniProt ID
Human	5331 ;	Q01970 ;
Mouse		P51432 ;
Rat		Q99JE6 ;

Cellular Localization Cytoplasm . Membrane . Nucleus . And particulate fractions .

Tissue specificity Epithelium,Uterus,

Function Catalytic activity:1-phosphatidyl-1D-myo-inositol 4,5-bisphosphate + H(2)O = 1D-myo-inositol 1,4,5-trisphosphate + diacylglycerol.,cofactor:Calcium.,Function:The production of the second messenger molecules diacylglycerol (DAG) and inositol 1,4,5-trisphosphate (IP3) is mediated by activated phosphatidylinositol-specific phospholipase C enzymes.,similarity:Contains 1 C2 domain.,similarity:Contains 1 PI-PLC X-box domain.,similarity:Contains 1 PI-PLC Y-box domain.,subunit:Interacts with SHANK2 (By similarity). Interacts with LPAR2.,

Validation Data



Various whole cell lysates were separated by 4-20% SDS-PAGE, and the membrane was blotted with anti-PLCβ3 (Phospho Ser537) (PT1500R) antibody. The HRP-conjugated Goat anti-Rabbit IgG (H + L) antibody was used to detect the antibody. Lane 1: HeLa Lane 2: HeLa was treated with TPA(200nM) for 15 minutes Predicted band size: 139kDa Observed band size: 150kDa

Contact information

Orders: order.cn@immunoway.com
Support: support.cn@immunoway.com
Telephone: 400-8787-807(China)
Website: <http://www.immunoway.com.cn>
Address: 2200 Ringwood Ave San Jose, CA 95131 USA



Please scan the QR code to access additional product information:
PLC β 3 (Phospho Ser537) (PT1500R) PT™ Rabbit mAb

For Research Use Only. Not for Use in Diagnostic Procedures.

[Antibody](#) | [ELISA Kits](#) | [Protein](#) | [Reagents](#)