

Cx30 (PT1490R) PT™ Rabbit mAb

CatalogNo: YM9332 **Recombinant** 

| Key Features

Host Species

- Rabbit

Reactivity

- Human, Mouse

Applications

- WB, IHC, IF, ELISA

MW

- 30kD (Calculated)

Isotype

- IgG, Kappa

| Storage

Storage* -15°C to -25°C/1 year (Do not lower than -25°C)

Formulation PBS, 50% glycerol, 0.05% Proclin 300, 0.05% BSA

| Recommended Dilution Ratios

IHC 1:100-1:500

WB 1:500-1:2000

IF 1:200-1:1000

ELISA 1:5000-1:20000

| Basic Information

Clonality Monoclonal

Clone Number PT1490R

| Immunogen Information

Specificity Endogenous

| Target Information

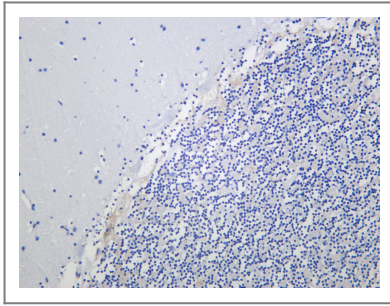
Gene name GJB6
Protein Name Gap junction beta-6 protein

Organism	Gene ID	UniProt ID
Human	10804 ;	O95452 ;
Mouse	14623 ;	P70689 ;

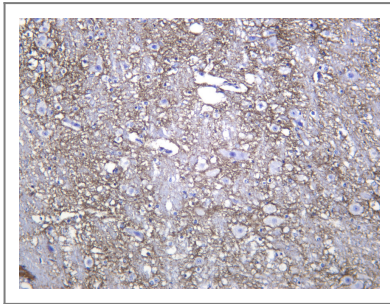
Cellular Localization Cell membrane; Multi-pass membrane protein. Cell junction, gap junction.

Function One gap junction consists of a cluster of closely packed pairs of transmembrane channels, the connexons, through which materials of low MW diffuse from one cell to a neighboring cell.

Validation Data



Human cerebellum was stained with anti-Cx30 (PT1490R) Rabbit antibody



Mouse brain was stained with anti-Cx30 (PT1490R) Rabbit antibody

Contact information

Orders: order.cn@immunoway.com
Support: support.cn@immunoway.com
Telephone: 400-8787-807(China)
Website: <http://www.immunoway.com.cn>
Address: 2200 Ringwood Ave San Jose, CA 95131 USA



Please scan the QR code to access additional product information:
Cx30 (PT1490R)
PT™ Rabbit mAb

