

Acetyl Lysine (PT1478R) PT™ Rabbit mAb

CatalogNo: YM9320 **Recombinant** 

Key Features

Host Species

- Rabbit

Reactivity

- Species independent

Applications

- WB,IHC,IF,IP,ELISA

Isotype

- IgG,Kappa

Storage

Storage* -15°C to -25°C/1 year(Do not lower than -25°C)

Formulation PBS, 50% glycerol, 0.05% Proclin 300, 0.05%BSA

Recommended Dilution Ratios

IHC 1:1000-1:2000

WB 1:500-1:2000

IF 1:200-1:1000

ELISA 1:5000-1:20000

IP 1:50-1:200

Basic Information

Clonality Monoclonal

Clone Number PT1478R

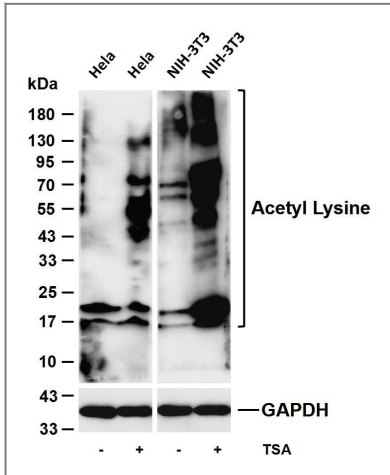
Immunogen Information

Specificity Endogenous

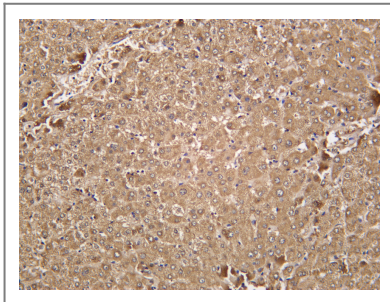
Target Information

Protein Name

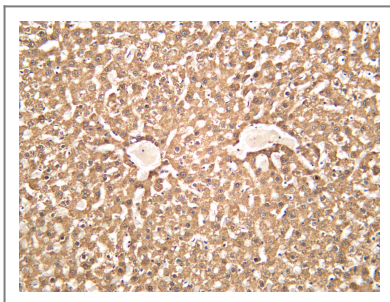
Validation Data



Various whole cell lysates were separated by 4-20% SDS-PAGE, and the membrane was blotted with anti-Acetyl Lysine (PT1478R) antibody. The HRP-conjugated Goat anti-Rabbit IgG (H + L) antibody was used to detect the antibody. Lane 1: HeLa Lane 2: HeLa treated overnight with TSA Lane 3: NIH-3T3 Lane 4: NIH-3T3 treated overnight with TSA



Human liver was stained with anti-Acetyl Lysine (PT1478R) Rabbit antibody



Rat liver was stained with anti-Acetyl Lysine (PT1478R) Rabbit antibody

Contact information

Orders: order.cn@immunoway.com
Support: support.cn@immunoway.com
Telephone: 400-8787-807(China)
Website: <http://www.immunoway.com.cn>
Address: 2200 Ringwood Ave San Jose, CA 95131 USA



Please scan the QR code
to access additional
product information:
**Acetyl Lysine
(PT1478R) PT™
Rabbit mAb**

For Research Use Only. Not for Use in Diagnostic Procedures.

[Antibody](#) | [ELISA Kits](#) | [Protein](#) | [Reagents](#)