

RPE65 (PT1469R) PT™ Rabbit mAb

CatalogNo: YM9311 **Recombinant** 

Key Features

Host Species

- Rabbit

Reactivity

- Human, Mouse, Rat

Applications

- WB, IHC, IF, IP, ELISA

MW

- 61kD (Calculated)
61kD (Observed)

Isotype

- IgG, Kappa

Storage

Storage* -15°C to -25°C/1 year (Do not lower than -25°C)**Formulation** PBS, 50% glycerol, 0.05% Proclin 300, 0.05% BSA

Recommended Dilution Ratios

IHC 1:100-1:200**WB 1:2000-1:10000****IF 1:200-1:1000****ELISA 1:5000-1:20000****IP 1:50-1:200**

Basic Information

Clonality Monoclonal**Clone Number** PT1469R

Immunogen Information

Specificity Endogenous

Target Information

Gene name RPE65

Protein Name Retinoid isomerohydrolase (All-trans-retinyl-palmitate hydrolase) (Retinal pigment epithelium-specific 65 kDa protein) (Retinol isomerase)

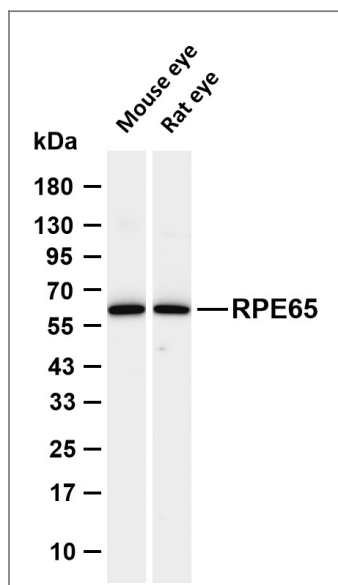
Organism	Gene ID	UniProt ID
Human	6121 ;	Q16518 ;
Mouse		Q91ZQ5 ;
Rat	89826 ;	O70276 ;

Cellular Localization Cytoplasm . Cell membrane ; Lipid-anchor . Microsome membrane . Attached to the membrane by a lipid anchor when palmitoylated (membrane form), soluble when unpalmitoylated. Undergoes light-dependent intracellular transport to become more concentrated in the central region of the retina pigment epithelium cells. .

Tissue specificity Retina (at protein level). Retinal pigment epithelium specific.

Function Critical isomerohydrolase in the retinoid cycle involved in regeneration of 11-cis-retinal, the chromophore of rod and cone opsins. Catalyzes the cleavage and isomerization of all-trans-retinyl fatty acid esters to 11-cis-retinol which is further oxidized by 11-cis retinol dehydrogenase to 11-cis-retinal for use as visual chromophore . Essential for the production of 11-cis retinal for both rod and cone photoreceptors . Also capable of catalyzing the isomerization of lutein to meso-zeaxanthin an eye-specific carotenoid . The soluble form binds vitamin A (all-trans-retinol), making it available for LRAT processing to all-trans-retinyl ester. The membrane form, palmitoylated by LRAT, binds all-trans-retinyl esters, making them available for IMH (isomerohydrolase) processing to all-cis-retinol. The soluble form is regenerated by transferring its palmitoyl groups onto 11-cis-retinol, a reaction catalyzed by LRAT (By similarity).

Validation Data



Various whole cell lysates were separated by 4-20% SDS-PAGE, and the membrane was blotted with anti-RPE65 (PT1469R) antibody. The HRP-conjugated Goat anti-Rabbit IgG (H + L) antibody was used to detect the antibody. Lane 1: Mouse eye Lane 2: Rat eye Predicted band size: 61kDa Observed band size: 61kDa

| Contact information

Orders: order.cn@immunoway.com
Support: support.cn@immunoway.com
Telephone: 400-8787-807(China)
Website: <http://www.immunoway.com.cn>
Address: 2200 Ringwood Ave San Jose, CA 95131 USA



Please scan the QR code
to access additional
product information:
RPE65 (PT1469R)
PT™ Rabbit mAb

For Research Use Only. Not for Use in Diagnostic Procedures.

[Antibody](#) | [ELISA Kits](#) | [Protein](#) | [Reagents](#)