

## IL-2 (PT1458R) PT™ Rabbit mAb

CatalogNo: YM9300 **Recombinant** 

### Key Features

#### Host Species

- Rabbit

#### Reactivity

- Human

#### Applications

- WB,IF,IP,ELISA

#### MW

- 18kD (Calculated)  
14kD (Observed)

#### Isotype

- IgG, Kappa

### Storage

**Storage\*** -15°C to -25°C/1 year (Do not lower than -25°C)

**Formulation** PBS, 50% glycerol, 0.05% Proclin 300, 0.05%BSA

### Recommended Dilution Ratios

**WB 1:500-1:2000**

**IF 1:200-1:1000**

**ELISA 1:5000-1:20000**

**IP 1:50-1:200**

### Basic Information

**Clonality** Monoclonal

**Clone Number** PT1458R

### Immunogen Information

**Immunogen** The specific immunogen used to produce this antibody is proprietary information.

**Specificity** Endogenous

## Target Information

**Gene name** IL2

**Protein Name** Interleukin-2

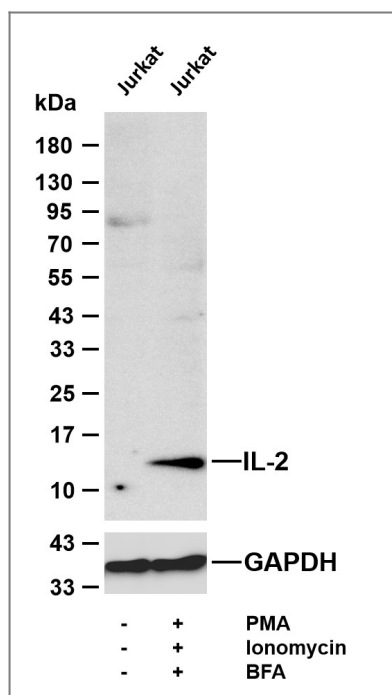
Organism	Gene ID	UniProt ID
Human	<a href="#">3558</a> ;	<a href="#">P60568</a> ;
Mouse		<a href="#">P04351</a> ;
Rat	<a href="#">116562</a> ;	<a href="#">P17108</a> ;

**Cellular Localization** Secreted.

**Tissue specificity** Blood ,PCR rescued clones ,Placenta ,Spleen ,

**Function** Disease:A chromosomal aberration involving IL2 is found in a form of T-cell acute lymphoblastic leukemia (T-ALL) . Translocation t (4;16) (q26;p13) with involves TNFRSF17. ,Function:Produced by T-cells in response to antigenic or mitogenic stimulation , this protein is required for T-cell proliferation and other activities crucial to regulation of the immune response. Can stimulate B-cells , monocytes , lymphokine-activated killer cells , natural killer cells , and glioma cells. ,online information:Interleukin-2 entry ,online information:The Singapore human mutation and polymorphism database ,pharmaceutical:Available under the name Proleukin (Chiron) . Used in patients with renal cell carcinoma or metastatic melanoma. ,similarity:Belongs to the IL-2 family. ,

## Validation Data



Various whole cell lysates were separated by 4-20% SDS-PAGE, and the membrane was blotted with anti-IL-2 (PT1458R) antibody. The HRP-conjugated Goat anti-Rabbit IgG (H + L) antibody was used to detect the antibody. Lane 1: Jurkat Lane 2: Jurkat was treated overnight with PMA (40nM), Ionomycin (2 $\mu$ M), and BFA (300ng/ml) (delayed for 45 minutes) Predicted band size: 18kDa Observed band size: 14kDa

## | Contact information

Orders: order.cn@immunoway.com  
Support: support.cn@immunoway.com  
Telephone: 400-8787-807(China)  
Website: <http://www.immunoway.com.cn>  
Address: 2200 Ringwood Ave San Jose, CA 95131 USA



Please scan the QR code  
to access additional  
product information:  
**IL-2 (PT1458R) PT™**  
**Rabbit mAb**

---

For Research Use Only. Not for Use in Diagnostic Procedures.

[Antibody](#) | [ELISA Kits](#) | [Protein](#) | [Reagents](#)