

# GLUT-2 (PT1424R) PT™ Rabbit mAb

CatalogNo: YM9266 **Recombinant** 

## Key Features

### Host Species

- Rabbit

### Reactivity

- Human, Mouse, Rat

### Applications

- WB, IHC, IF, ELISA

### MW

- 57kD (Calculated)
- 58kD (Observed)

### Isotype

- IgG, Kappa

## Storage

**Storage\*** -15°C to -25°C/1 year (Do not lower than -25°C)**Formulation** PBS, 50% glycerol, 0.05% Proclin 300, 0.05% BSA

## Recommended Dilution Ratios

**IHC 1:1000-1:400****WB 1:2000-1:10000****IF 1:200-1:1000****ELISA 1:5000-1:20000**

## Basic Information

**Clonality** Monoclonal**Clone Number** PT1424R

## Immunogen Information

**Specificity** Endogenous

## Target Information

**Gene name** SLC2A2 GLUT2

**Protein Name** Solute carrier family 2, facilitated glucose transporter member 2 (Glucose transporter type 2, liver) (GLUT-2)

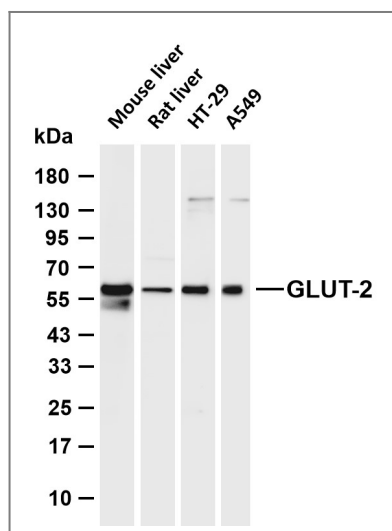
Organism	Gene ID	UniProt ID
Human	<a href="#">6514;</a>	<a href="#">P11168;</a>
Mouse		<a href="#">P14246;</a>
Rat		<a href="#">P12336;</a>

**Cellular Localization** Cell membrane ; Multi-pass membrane protein .

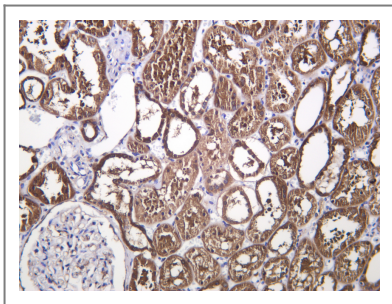
**Tissue specificity** Liver, insulin-producing beta cell, small intestine and kidney.

**Function** Disease:Defects in SLC2A2 are the cause of Fanconi-Bickel syndrome (FBS) [MIM:227810]. FBS is a rare, well-defined clinical entity, inherited in an autosomal recessive mode and characterized by hepatorenal glycogen accumulation, proximal renal tubular dysfunction, and impaired utilization of glucose and galactose.,Function:Facilitative glucose transporter. This isoform likely mediates the bidirectional transfer of glucose across the plasma membrane of hepatocytes and is responsible for uptake of glucose by the beta cells; may comprise part of the glucose-sensing mechanism of the beta cell. May also participate with the Na(+)/glucose cotransporter in the transcellular transport of glucose in the small intestine and kidney.,online information:GLUT2 entry,PTM:N-glycosylated; required for stability and retention at the cell surface of pancreatic beta cells.,similarity:Belongs to the major facilitator superfamily. Sugar transporter (TC 2.A.1.1) family. Glucose transporter subfamily.,tissue specificity:Liver, insulin-producing beta cell, small intestine and kidney.,

## Validation Data



Various whole cell lysates were separated by 4-20% SDS-PAGE, and the membrane was blotted with anti-GLUT-2 (PT1424R) antibody. The HRP-conjugated Goat anti-Rabbit IgG (H + L) antibody was used to detect the antibody. Lane 1: Mouse liver Lane 2: Rat liver Lane 3: HT-29 Lane 4: A549 Predicted band size: 57kDa Observed band size: 58kDa



Human kidney was stained with anti-GLUT-2 (PT1424R) Rabbit antibody

## Contact information

Orders: [order.cn@immunoway.com](mailto:order.cn@immunoway.com)  
Support: [support.cn@immunoway.com](mailto:support.cn@immunoway.com)  
Telephone: 400-8787-807(China)  
Website: <http://www.immunoway.com.cn>  
Address: 2200 Ringwood Ave San Jose, CA 95131 USA



Please scan the QR code  
to access additional  
product information:  
**GLUT-2 (PT1424R)**  
**PT™ Rabbit mAb**

For Research Use Only. Not for Use in Diagnostic Procedures.

[Antibody](#) | [ELISA Kits](#) | [Protein](#) | [Reagents](#)