

LKB1 (Phospho Ser428) (PT1347R) PT™ Rabbit mAb

CatalogNo: YM9189 **Recombinant** 

Key Features

Host Species

- Rabbit

Reactivity

- Human, Mouse, Rat

Applications

- WB, IF, ELISA

MW

- 49kD (Calculated)
- 55kD (Observed)

Isotype

- IgG, Kappa

Storage

Storage* -15°C to -25°C/1 year (Do not lower than -25°C)**Formulation** PBS, 50% glycerol, 0.05% Proclin 300, 0.05% BSA

Recommended Dilution Ratios

WB 1:2000-1:10000**IF 1:200-1:1000****ELISA 1:5000-1:20000**

Basic Information

Clonality Monoclonal**Clone Number** PT1347R

Immunogen Information

Specificity

LKB1 (Phospho Ser428) Antibody detects endogenous levels of LKB1 protein only when phosphorylated at S428. The name of modified sites may be influenced by many factors, such as species (the modified site was not originally found in human samples) and the change of protein sequence (the previous protein sequence is incomplete, and the protein sequence may be prolonged with the development of protein sequencing technology). When naming, we will use the "numbers" in historical reference to keep the sites consistent with the reports. The antibody binds to the following modification sequence (lowercase letters are modification sites): RLSAC

Target Information

Gene name STK11

Protein Name Serine/threonine-protein kinase STK11

Organism	Gene ID	UniProt ID
Human	6794 ;	Q15831 ;
Mouse	20869 ;	Q9WTK7 ;

Cellular Localization

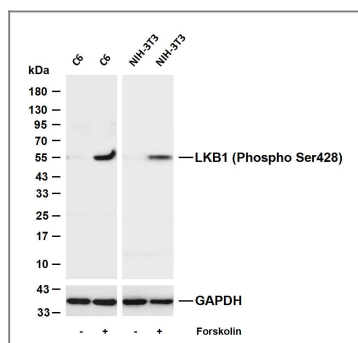
Nucleus. Cytoplasm. Membrane . Mitochondrion. A small fraction localizes at membranes (By similarity). Relocates to the cytoplasm when bound to STRAD (STRADA or STRADB) and CAB39/MO25 (CAB39/MO25alpha or CAB39L/MO25beta). Translocates to the mitochondrion during apoptosis. PTEN promotes cytoplasmic localization. .; [Isoform 2]: Nucleus . Cytoplasm . Predominantly nuclear, but translocates to the cytoplasm in response to metformin or peroxynitrite treatment.

Tissue specificity Ubiquitously expressed. Strongest expression in testis and fetal liver.

Function

Catalytic activity:ATP + a protein = ADP + a phosphoprotein.,cofactor:Magnesium or manganese.,Disease:Defects in STK11 are a cause of Peutz-Jeghers syndrome (PJS) [MIM:175200]. PJS is a rare hereditary disease in which there is predisposition to benign and malignant tumors of many organ systems. PJS is an autosomal dominant disorder characterized by melanocytic macules of the lips, multiple gastrointestinal hamartomatous polyps and an increased risk for various neoplasms, including gastrointestinal cancer.,Disease:Defects in STK11 have been associated with testicular tumors [MIM:273300]. It includes germ cell tumor (GCT) or testicular germ cell tumor (TGCT).,enzyme regulation:Activated by binding of a complex consisting of CAB39 and STRAD or CAB39 and ALS2CR2.,Function:Essential role in G1 cell cycle arrest. Phosphorylates and activates members of the AMPK-related subfamily of protein kinases. Tumor suppressor.,online information:PJS entry,PTM:Phosphorylated by a cAMP-dependent protein kinase.,similarity:Belongs to the protein kinase superfamily.,similarity:Belongs to the protein kinase superfamily. CAMK Ser/Thr protein kinase family. LKB1 subfamily.,similarity:Contains 1 protein kinase domain.,subcellular location:Relocates to the cytoplasm when bound to CAB39 and STRAD or CAB39 and ALS2CR2.,subunit:Found in a ternary complex composed of SMAD4, STK11 and STK11IP. Interacts with SMAD4 and STK11IP.,tissue specificity:Ubiquitously expressed. Strongest expression in testis and fetal liver.,

Validation Data



Various whole cell lysates were separated by 4-20% SDS-PAGE, and the membrane was blotted with anti-LKB1 (Phospho Ser428) (PT1347R) antibody. The HRP-conjugated Goat anti-Rabbit IgG (H + L) antibody was used to detect the antibody. Lane 1: C6 Lane 2: C6 was treated with Forskolin(10 μ M) for 1 hour Lane 3: NIH-3T3 Lane 4: NIH-3T3 was treated with Forskolin(10 μ M) for 1 hour Predicted band size: 49kDa Observed band size: 55kDa

| Contact information

Orders: order.cn@immunoway.com
Support: support.cn@immunoway.com
Telephone: 400-8787-807(China)
Website: <http://www.immunoway.com.cn>
Address: 2200 Ringwood Ave San Jose, CA 95131 USA



Please scan the QR code to access additional product information:
LKB1 (Phospho Ser428) (PT1347R) PT™ Rabbit mAb

For Research Use Only. Not for Use in Diagnostic Procedures.

[Antibody](#) | [ELISA Kits](#) | [Protein](#) | [Reagents](#)