

## UBF-1 (PT1341R) PT™ Rabbit mAb

CatalogNo: YM9183 **Recombinant** 

### Key Features

#### Host Species

- Rabbit

#### Reactivity

- Human, Mouse, Rat

#### Applications

- WB, IHC, IF, ELISA

#### MW

- 89kD (Calculated)  
89kD (Observed)

#### Isotype

- IgG, Kappa

### Storage

**Storage\*** -15°C to -25°C/1 year (Do not lower than -25°C)

**Formulation** PBS, 50% glycerol, 0.05% Proclin 300, 0.05% BSA

### Recommended Dilution Ratios

**IHC 1:400-1:1000**

**WB 1:2000-1:10000**

**IF 1:200-1:1000**

**ELISA 1:5000-1:20000**

### Basic Information

**Clonality** Monoclonal

**Clone Number** PT1341R

### Immunogen Information

**Specificity** Endogenous

## Target Information

**Gene name** UBTF

**Protein Name** Nucleolar transcription factor 1

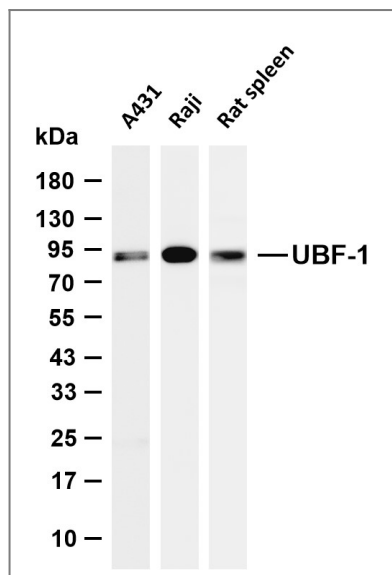
Organism	Gene ID	UniProt ID
Human	<a href="#">7343</a> ;	<a href="#">P17480</a> ;
Mouse		<a href="#">P25976</a> ;
Rat	<a href="#">25574</a> ;	<a href="#">P25977</a> ;

**Cellular Localization** Nucleus, nucleolus .

**Tissue specificity** Lymph,Placenta,Testis,

**Function** Function:Recognizes the ribosomal RNA gene promoter and activates transcription mediated by RNA polymerase I through cooperative interactions with the species-specific factor SL1. It binds specifically to the upstream control element.,PTM:Phosphorylated and activated by PIK3CA.,similarity:Contains 6 HMG box DNA-binding domains.,subunit:Homodimer. Binds to IRS1 and PIK3CA.,

## Validation Data



Various whole cell lysates were separated by 4-20% SDS-PAGE, and the membrane was blotted with anti-UBF-1 (PT1341R) antibody. The HRP-conjugated Goat anti-Rabbit IgG (H + L) antibody was used to detect the antibody. Lane 1: A431 Lane 2: Raji Lane 3: Rat spleen Predicted band size: 89kDa Observed band size: 89kDa

## Contact information

Orders: order.cn@immunoway.com  
Support: support.cn@immunoway.com  
Telephone: 400-8787-807(China)  
Website: http://www.immunoway.com.cn  
Address: 2200 Ringwood Ave San Jose, CA 95131 USA



Please scan the QR code  
to access additional  
product information:  
**UBF-1 (PT1341R)**  
**PT™ Rabbit mAb**

---

For Research Use Only. Not for Use in Diagnostic Procedures.

[Antibody](#) | [ELISA Kits](#) | [Protein](#) | [Reagents](#)