

Cytokeratin 6 (PT1338R) PT™ Rabbit mAb

CatalogNo: YM9180 **Recombinant** 

★IHC

Key Features

Host Species

- Rabbit

Reactivity

- Human, Mouse, Rat

Applications

- WB, IHC, IF, ELISA

MW

- 60kD (Calculated)
60kD (Observed)

Isotype

- IgG, Kappa

Storage

Storage* -15°C to -25°C/1 year (Do not lower than -25°C)

Formulation PBS, 50% glycerol, 0.05% Proclin 300, 0.05% BSA

Recommended Dilution Ratios

IHC 1:200-1:1000

WB 1:2000-1:10000

IF 1:200-1:1000

ELISA 1:5000-1:20000

Basic Information

Clonality Monoclonal

Clone Number PT1338R

Immunogen Information

Specificity Endogenous

| Target Information

Gene name KRT6A K6A KRT6D

Protein Name CK 6A;CK 6B;CK 6C;CK 6D;CK 6E;CK-6B;CK-6C;CK-6E;Cytokeratin 6a;Cytokeratin 6B;Cytokeratin 6C;Cytokeratin 6D;Cytokeratin 6E;Cytokeratin-6B;Cytokeratin-6C;Cytokeratin-6E;K2C6C_HUMAN;K6a keratin;K6b keratin;K6C;K6c keratin;K6d keratin;K6e keratin;Keratin;Keratin K6h;Keratin type II cytoskeletal 6A;Keratin type II cytoskeletal 6B;Keratin type II cytoskeletal 6C;Keratin type II cytoskeletal 6D;Keratin type II cytoskeletal 6E;Keratin-6C;KRT6A;KRT6B;KRT6C;KRT6D;KRT6E;type II cytoskeletal 6C;Type-II keratin Kb12

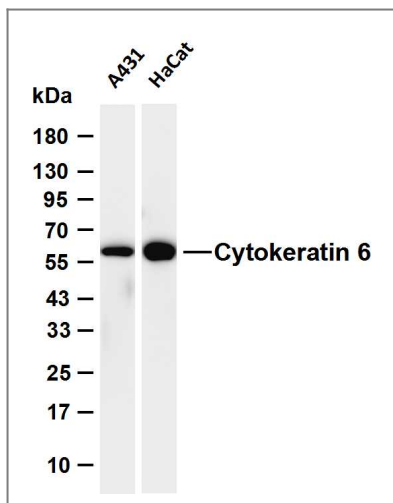
Organism	Gene ID	UniProt ID
Human		P48668;
Mouse		P50446;
Rat		Q4FZU2;

Cellular Localization Cytoplasmic, Membranous

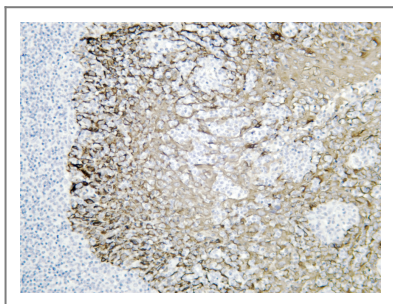
Tissue specificity Tonsil/ Prostate

Function allergen:Causes an allergic reaction in human. Binds to IgE from atopic dermatitis (AD) patients. Identified as an IgE autoantigen in atopic dermatitis (AD) patients with severe skin manifestations.,Disease:Defects in KRT6A are a cause of pachyonychia congenita type 1 (PC1) [MIM:167200]; also known as Jadassohn-Lewandowsky syndrome. PC1 is an autosomal dominant ectodermal dysplasia characterized by hypertrophic nail dystrophy resulting in onchyogryposis (thickening and increase in curvature of the nail), palmoplantar keratoderma, follicular hyperkeratosis, and oral leukokeratosis. Hyperhidrosis of the hands and feet is usually present.,miscellaneous:There are at least six isoforms of human type II keratin-6 (K6), K6A being the most abundant representing about 77% of all forms found in epithelia.,miscellaneous:There are two types of cytoskeletal and microfibrillar keratin, I (acidic) and II (neutral to basic) (40-55 and 56-70 kDa, respectively).,similarity:Belongs to the intermediate filament family.,subunit:Heterodimer of a type I and a type II keratin. KRT6 isomers associate with KRT16 and/or KRT17. Interacts with TCHP.,tissue specificity:Constitutively expressed in distinct types of epithelia such as those in oral mucosa, esophagus, papillae of tongue and hair follicle outer root sheath.,

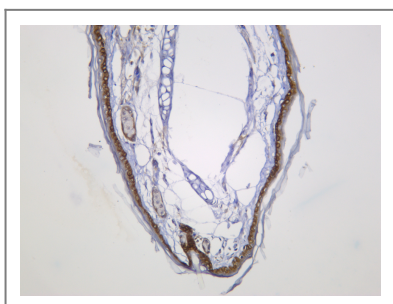
| Validation Data



Various whole cell lysates were separated by 4-20% SDS-PAGE, and the membrane was blotted with anti-Cytokeratin 6 (PT1338R) antibody. The HRP-conjugated Goat anti-Rabbit IgG (H + L) antibody was used to detect the antibody. Lane 1: A431 Lane 2: HaCat Predicted band size: 60kDa Observed band size: 60kDa



Human tonsil was stained with anti-Cytokeratin 6 (PT1338R) Rabbit antibody



Mouse skin was stained with anti-Cytokeratin 6 (PT1338R) Rabbit antibody

Contact information

Orders: order.cn@immunoway.com
 Support: support.cn@immunoway.com
 Telephone: 400-8787-807(China)
 Website: <http://www.immunoway.com.cn>
 Address: 2200 Ringwood Ave San Jose, CA 95131 USA



Please scan the QR code to access additional product information:
Cytokeratin 6 (PT1338R) PT™ Rabbit mAb