

# Neddylin (PT1238R) PT™ Rabbit mAb

CatalogNo: YM9080 **Recombinant** 

## Key Features

### Host Species

- Rabbit

### Reactivity

- Human, Mouse, Rat

### Applications

- WB, IHC, IF, IP, ELISA

### MW

- 9kD (Calculated)  
9kD (Observed)

### Isotype

- IgG, Kappa

## Storage

**Storage\*** -15°C to -25°C/1 year (Do not lower than -25°C)**Formulation** PBS, 50% glycerol, 0.05% Proclin 300, 0.05% BSA

## Recommended Dilution Ratios

**IHC 1:200-1:1000****WB 1:2000-1:10000****IF 1:200-1:1000****ELISA 1:5000-1:20000****IP 1:50-1:200**

## Basic Information

**Clonality** Monoclonal**Clone Number** PT1238R

## Immunogen Information

**Specificity** Endogenous

## Target Information

**Gene name** NEDD8

**Protein Name** NEDD8

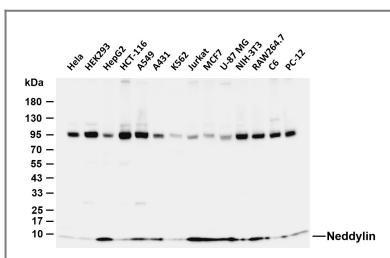
Organism	Gene ID	UniProt ID
Human	<a href="#">4738;</a>	<a href="#">Q15843;</a>
Mouse	<a href="#">18002;</a>	<a href="#">P29595;</a>
Rat	<a href="#">25490;</a>	<a href="#">Q71UE8;</a>

**Cellular Localization** Nucleus . Mainly nuclear. .

**Tissue specificity** Highly expressed in heart, skeletal muscle, spleen, thymus, prostate, testis, ovary, colon and leukocytes.

**Function** Function:Ubiquitin-like protein which plays an important role in cell cycle control and embryogenesis. Covalent attachment to its substrates requires prior activation by the E1 complex UBE1C-APPBP1 and linkage to the E2 enzyme UBE2M. Attachment of NEDD8 to cullins activates their associated E3 ubiquitin ligase activity, and thus promotes polyubiquitination and proteasomal degradation of cyclins and other regulatory proteins.,PTM:Cleavage of precursor form by UCHL3 or SENP8 is necessary for function.,similarity:Belongs to the ubiquitin family.,subcellular location:Mainly nuclear.,subunit:Directly interacts with NUB1 and AHR. Covalently attached to cullins and p53.,tissue specificity:Highly expressed in heart, skeletal muscle, spleen, thymus, prostate, testis, ovary, colon and leukocytes.,

## Validation Data



Various whole cell lysates were separated by 4-20% SDS-PAGE, and the membrane was blotted with anti-Neddylin (PT1238R) antibody. The HRP-conjugated Goat anti-Rabbit IgG (H + L) antibody was used to detect the antibody. Lane 1: HeLa Lane 2: HEK293 Lane 3: HepG2 Lane 4: HCT-116 Lane 5: A549 Lane 6: A431 Lane 7: K562 Lane 8: Jurkat Lane 9: MCF7 Lane 10: U-87 MG Lane 11: NIH-3T3 Lane 12: RAW264.7 Lane 13: C6 Lane 14: PC-12 Predicted band size: 9kDa Observed band size: 9kDa

## Contact information

Orders: [order.cn@immunoway.com](mailto:order.cn@immunoway.com)  
Support: [support.cn@immunoway.com](mailto:support.cn@immunoway.com)  
Telephone: 400-8787-807(China)  
Website: <http://www.immunoway.com.cn>  
Address: 2200 Ringwood Ave San Jose, CA 95131 USA



Please scan the QR code to access additional product information:  
**Neddylin (PT1238R)**  
**PT™ Rabbit mAb**

