

β2-MG (PT1216R) PT™ Rabbit mAb

CatalogNo: YM9058 **Recombinant** 

Key Features

Host Species

- Rabbit

Reactivity

- Human, Mouse, Rat

Applications

- WB, IHC, IF, IP, ELISA

MW

- 14kD (Calculated)
12kD (Observed)

Isotype

- IgG, Kappa

Recommended Dilution Ratios

IHC 1:2000-1:10000

WB 1:2000-1:10000

IF 1:200-1:1000

ELISA 1:5000-1:20000

IP 1:50-1:200

Storage

Storage* -15°C to -25°C/1 year (Do not lower than -25°C)**Formulation** PBS, 50% glycerol, 0.05% Proclin 300, 0.05% BSA

Basic Information

Clonality Monoclonal**Clone Number** PT1216R

Immunogen Information

Specificity Endogenous

Target Information

Gene name B2M CDABP0092 HDCMA22P

Protein Name Beta-2-microglobulin

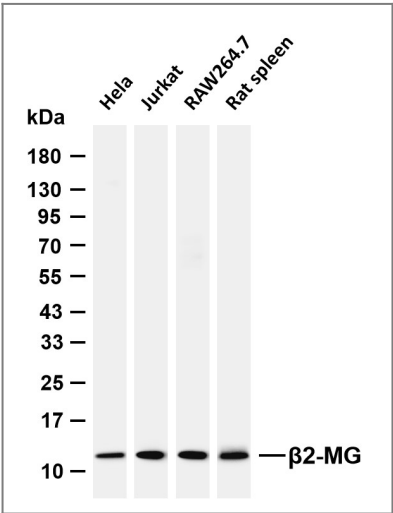
Organism	Gene ID	UniProt ID
Human	567;	P61769;
Mouse		P01887;
Rat		P07151;

Cellular Localization Secreted . Cell surface . Detected in serum and urine (PubMed:1336137, PubMed:7554280). .; (Microbial infection) In the presence of M.tuberculosis EsxA-EsxB complex decreased amounts of B2M are found on the cell surface (PubMed:25356553). .

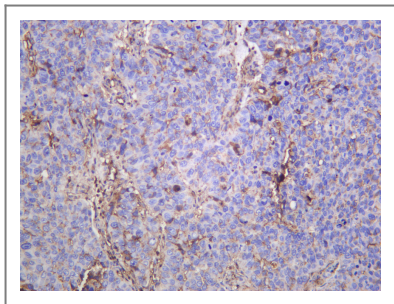
Tissue specificity Dendritic cell, Eye, Leukemia, Peripheral blood, Skin, Trachea, Urine,

Function Disease: Defects in B2M are the cause of hypercatabolic hypoproteinemia [MIM:241600]. Affected individuals show marked reduction in serum concentrations of immunoglobulin and albumin, probably due to rapid degradation. . Function: Beta-2-microglobulin is the beta-chain of major histocompatibility complex class I molecules. . online information: Beta-2-microglobulin entry, PTM: Glycation of Ile-21 is observed in long-term hemodialysis patients. . similarity: Belongs to the beta-2-microglobulin family. . similarity: Contains 1 Ig-like C1-type (immunoglobulin-like) domain. .

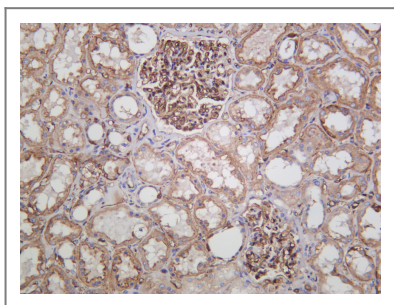
Validation Data



Various whole cell lysates were separated by 4-20% SDS-PAGE, and the membrane was blotted with anti-β2-MG (PT1216R) antibody. The HRP-conjugated Goat anti-Rabbit IgG (H + L) antibody was used to detect the antibody. Lane 1: Hela Lane 2: Jurkat Lane 3: RAW264.7 Lane 4: Rat spleen Predicted band size: 14kDa Observed band size: 12kDa



Human bladder carcinoma was stained with anti- β 2-MG (PT1216R) Rabbit antibody



Human kidney was stained with anti- β 2-MG (PT1216R) Rabbit antibody

| Contact information

Orders: order.cn@immunoway.com
Support: support.cn@immunoway.com
Telephone: 400-8787-807(China)
Website: <http://www.immunoway.com.cn>
Address: 2200 Ringwood Ave San Jose, CA 95131 USA



Please scan the QR code
to access additional
product information:
 β 2-MG (PT1216R)
PT™ Rabbit mAb

For Research Use Only. Not for Use in Diagnostic Procedures.

[Antibody](#) | [ELISA Kits](#) | [Protein](#) | [Reagents](#)