

## IL-1RI (PT1193R) PT™ Rabbit mAb

CatalogNo: YM9002 **Recombinant** 

### Key Features

#### Host Species

- Rabbit

#### Reactivity

- Mouse,Rat

#### Applications

- WB,IF,ELISA

#### MW

- 65kD (Calculated)  
80kD (Observed)

#### Isotype

- IgG,Kappa

### Storage

**Storage\*** -15°C to -25°C/1 year(Do not lower than -25°C)

**Formulation** PBS, 50% glycerol, 0.05% Proclin 300, 0.05%BSA

### Recommended Dilution Ratios

**WB 1:2000-1:10000**

**IF 1:200-1:1000**

**ELISA 1:5000-1:20000**

### Basic Information

**Clonality** Monoclonal

**Clone Number** PT1193R

### Immunogen Information

**Specificity** Endogenous

### Target Information

**Gene name** IL1R1

**Protein Name** Interleukin-1 receptor type 1

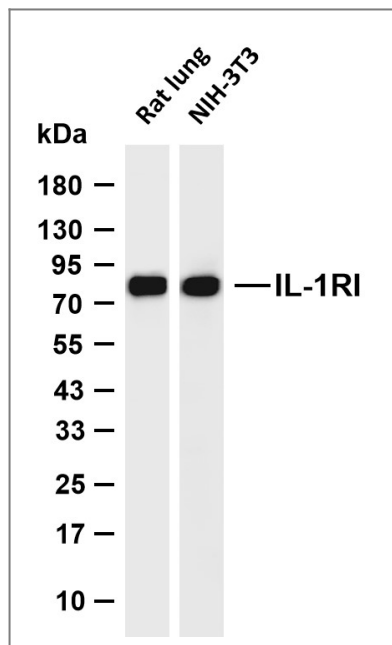
Organism	Gene ID	UniProt ID
Human	<a href="#">3554;</a>	<a href="#">P14778;</a>
Mouse		<a href="#">P13504;</a>

**Cellular Localization** Membrane ; Single-pass type I membrane protein . Cell membrane . Secreted .

**Tissue specificity** Expressed in T-helper cell subsets. Preferentially expressed in T-helper 1 (Th1) cells.

**Function** Function:Receptor for interleukin-1 alpha (IL-1A), beta (IL-1B), and interleukin-1 receptor antagonist protein (IL-1RA). Binding to the agonist leads to the activation of NF-kappa-B. Signaling involves formation of a ternary complex containing IL1RAP, TOLLIP, MYD88, and IRAK1 or IRAK2.,similarity:Belongs to the interleukin-1 receptor family.,similarity:Contains 1 TIR domain.,similarity:Contains 3 Ig-like C2-type (immunoglobulin-like) domains.,subunit:Binds IL1RAP.,

## Validation Data



Various whole cell lysates were separated by 4-20% SDS-PAGE, and the membrane was blotted with anti-IL-1RI (PT1193R) antibody. The HRP-conjugated Goat anti-Rabbit IgG (H + L) antibody was used to detect the antibody. Lane 1: Rat lung Lane 2: NIH-3T3 Predicted band size: 65kDa Observed band size: 80kDa

## Contact information

Orders: order.cn@immunoway.com  
Support: support.cn@immunoway.com  
Telephone: 400-8787-807(China)  
Website: http://www.immunoway.com.cn  
Address: 2200 Ringwood Ave San Jose, CA 95131 USA



Please scan the QR code  
to access additional  
product information:  
**IL-1RI (PT1193R)**  
**PT™ Rabbit mAb**

---

For Research Use Only. Not for Use in Diagnostic Procedures.

[Antibody](#) | [ELISA Kits](#) | [Protein](#) | [Reagents](#)