

## NBEAL2 (PT0807R) PT™ Rabbit mAb

CatalogNo: YM8992 **Recombinant** 

### Key Features

#### Host Species

- Rabbit

#### Reactivity

- Human

#### Applications

- WB

#### MW

- 303kD (Observed)

#### Isotype

- IgG,Kappa

### Storage

**Storage\*** -15°C to -25°C/1 year(Do not lower than -25°C)

**Formulation** PBS, 50% glycerol, 0.05% Proclin 300, 0.05%BSA

### Recommended Dilution Ratios

WB 1:1000-5000

### Basic Information

**Clonality** Monoclonal

**Clone Number** PT0807R

### Immunogen Information

**Specificity** Endogenous

### Target Information

**Gene name** NBEAL2;KIAA0540;UNQ253/PRO290

**Protein Name** Neurobeachin-like protein 2

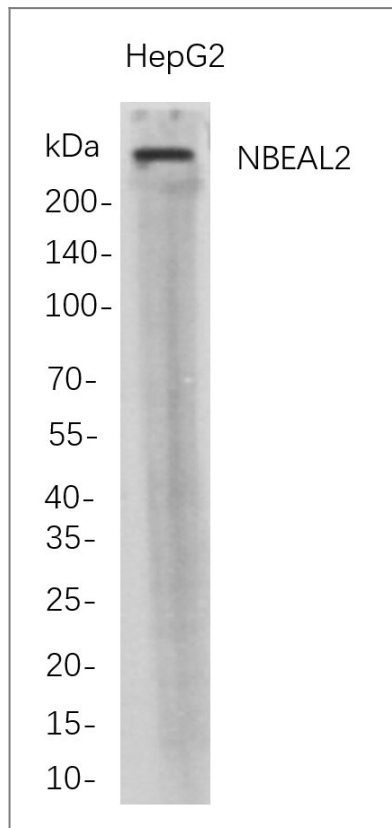
Organism	Gene ID	UniProt ID
Human	<a href="#">23218</a> ;	<a href="#">Q6ZNI1</a> ;

**Cellular Localization** Endoplasmic reticulum.

**Tissue specificity** Expressed in megakaryocytes. {ECO:0000269|PubMed:21765411}.

**Function** Probably involved in thrombopoiesis. Plays a role in the development or secretion of alpha-granules, that contain several growth factors important for platelet biogenesis. {ECO:0000269|PubMed:21765411, ECO:0000269|PubMed:21765412}.

## Validation Data



Western Blot analysis of HepG2 whole cell lysates were separated by 4-20% SDS-PAGE, and the membrane was blotted with anti-NBEAL2 rabbit mAb. The HRP-conjugated Goat anti-Rabbit IgG(H + L) antibody was used to detect the antibody.

## Contact information

Orders: [order.cn@immunoway.com](mailto:order.cn@immunoway.com)  
Support: [support.cn@immunoway.com](mailto:support.cn@immunoway.com)  
Telephone: 400-8787-807(China)  
Website: <http://www.immunoway.com.cn>  
Address: 2200 Ringwood Ave San Jose, CA 95131 USA



Please scan the QR code to access additional product information:  
**NBEAL2 (PT0807R)**  
**PT™ Rabbit mAb**

