

## BRAT1 (PT0803R) PT™ Rabbit mAb

CatalogNo: YM8898 **Recombinant** 

### Key Features

#### Host Species

- Rabbit

#### Reactivity

- Human

#### Applications

- WB,IF,ICC,FC,IP

#### MW

- 90kD (Observed)

#### Isotype

- IgG,Kappa

### Recommended Dilution Ratios

**WB 1:1000-5000**

**ICC/IF 1:100-300**

**FC 1:100-300**

**IP 1:50-100**

### Storage

**Storage\*** -15°C to -25°C/1 year(Do not lower than -25°C)

**Formulation** PBS, 50% glycerol, 0.05% Proclin 300, 0.05%BSA

### Basic Information

**Clonality** Monoclonal

**Clone Number** PT0803R

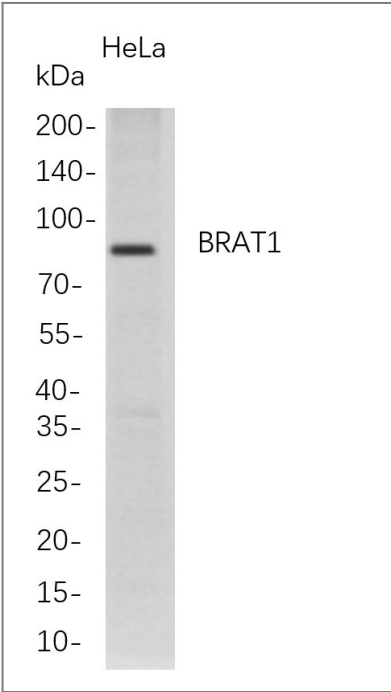
### Immunogen Information

**Specificity** Endogenous

### Target Information

Gene name	BRAT1;BAAT1;C7orf27		
Protein Name	BRCA1-associated ATM activator 1;BRCA1-associated protein required for ATM activation protein 1;		
	Organism	Gene ID	UniProt ID
	Human	<a href="#">221927</a> ;	<a href="#">Q6PJG6</a> ;
Cellular Localization	Nucleus. Cytoplasm. Note=Present at double strand breaks (DSBs)following ionizing radiation treatment. The ubiquitinated form localizes in the nucleus in a NDFIP1-dependent manner..		
Tissue specificity	Ubiquitously expressed. {ECO:0000269 PubMed:16452482}.		
Function	Involved in DNA damage response; activates kinases ATM, SMC1A and PRKDC by modulating their phosphorylation status following ionizing radiation (IR) stress (PubMed:16452482, PubMed:22977523). Plays a role in regulating mitochondrial function and cell proliferation (PubMed:25070371). Required for protein stability of MTOR and MTOR-related proteins, and cell cycle progress by growth factors (PubMed:25657994). {ECO:0000269 PubMed:16452482, ECO:0000269 PubMed:22977523, ECO:0000269 PubMed:25070371, ECO:0000269 PubMed:25657994}.		

Validation Data



Western Blot analysis of HeLa whole cell lysates were separated by 4-20% SDS-PAGE, and the membrane was blotted with anti-BRAT1 rabbit mAb. The HRP-conjugated Goat anti-Rabbit IgG(H + L) antibody was used to detect the antibody.

Contact information

Orders: order.cn@immunoway.com  
Support: support.cn@immunoway.com  
Telephone: 400-8787-807(China)  
Website: <http://www.immunoway.com.cn>  
Address: 2200 Ringwood Ave San Jose, CA 95131 USA



Please scan the QR code  
to access additional  
product information:  
**BRAT1 (PT0803R)**  
**PT™ Rabbit mAb**

---

For Research Use Only. Not for Use in Diagnostic Procedures.

[Antibody](#) | [ELISA Kits](#) | [Protein](#) | [Reagents](#)