

## Islet-1 (PT1157R) PT<sup>®</sup> Rabbit mAb

CatalogNo: YM8889 **Recombinant** 

### Key Features

#### Host Species

- Rabbit

#### Reactivity

- Human, Mouse, Rat

#### Applications

- WB, IHC, IF, IP, ELISA

#### MW

- 39kD (Calculated)
- 39kD (Observed)

#### Isotype

- IgG, Kappa

### Recommended Dilution Ratios

IHC 1:200-1:1000

WB 1:2000-1:10000

IF 1:200-1:1000

ELISA 1:5000-1:20000

IP 1:50-1:200

### Storage

**Storage\*** -15°C to -25°C/1 year (Do not lower than -25°C)**Formulation** PBS, 50% glycerol, 0.05% Proclin 300, 0.05% BSA

### Basic Information

**Clonality** Monoclonal**Clone Number** PT1157R

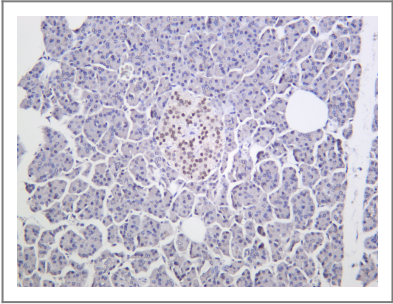
### Immunogen Information

**Specificity** Endogenous

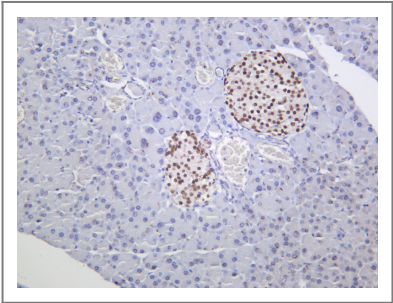
## | Target Information

Gene name	ISL1		
Protein Name	Insulin gene enhancer protein ISL-1		
	Organism	Gene ID	UniProt ID
	Human	<a href="#">3670</a> ;	<a href="#">P61371</a> ;
	Mouse		<a href="#">P61372</a> ;
Cellular Localization	Nucleus .		
Tissue specificity	Expressed in subsets of neurons of the adrenal medulla and dorsal root ganglion, inner nuclear and ganglion cell layers in the retina, the pineal and some regions of the brain.		
Function	Function: Binds to one of the cis-acting domain of the insulin gene enhancer.,similarity: Contains 1 homeobox DNA-binding domain.,similarity: Contains 2 LIM zinc-binding domains.,tissue specificity: Expressed in subsets of neurons of the adrenal medulla and dorsal root ganglion, inner nuclear and ganglion cell layers in the retina, the pineal and some regions of the brain.,		

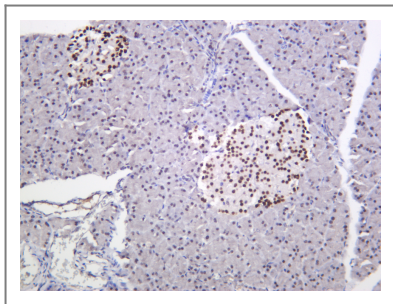
## | Validation Data



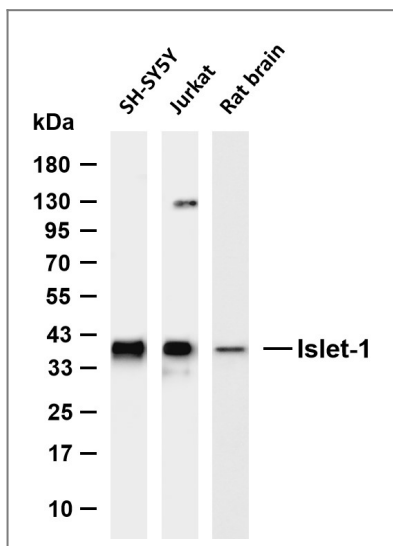
Human pancreas was stained with anti-Islet-1 (PT1157R) Rabbit antibody



Mouse pancreas was stained with anti-Islet-1 (PT1157R) Rabbit antibody



Rat pancreas was stained with anti-Islet-1 (PT1157R) Rabbit antibody



Various whole cell lysates were separated by 4-20% SDS-PAGE, and the membrane was blotted with anti-Islet-1 (PT1157R) antibody. The HRP-conjugated Goat anti-Rabbit IgG (H + L) antibody was used to detect the antibody. Lane 1: SH-SY5Y Lane 2: Jurkat Lane 3: Rat brain Predicted band size: 39kDa Observed band size: 39kDa

## Contact information

Orders: order.cn@immunoway.com  
 Support: support.cn@immunoway.com  
 Telephone: 400-8787-807(China)  
 Website: <http://www.immunoway.com.cn>  
 Address: 2200 Ringwood Ave San Jose, CA 95131 USA



Please scan the QR code to access additional product information:  
**Islet-1 (PT1157R)**  
**PT® Rabbit mAb**

For Research Use Only. Not for Use in Diagnostic Procedures.

[Antibody](#) | [ELISA Kits](#) | [Protein](#) | [Reagents](#)