

p70 S6 kinase β (Phospho Ser371) (PT0919R) PT[®] Rabbit mAb

CatalogNo: YM8688 **Recombinant** 

Key Features

Host Species

- Rabbit

Reactivity

- Human, Mouse, Rat

Applications

- WB, IHC, IF, IP, ELISA

MW

- 53kD (Calculated)
60kD (Observed)

Isotype

- IgG, Kappa

Recommended Dilution Ratios

IHC 1:500-1:2000**WB 1:2000-1:10000****IF 1:200-1:1000****ELISA 1:5000-1:20000****IP 1:50-1:200**

Storage

Storage* -15°C to -25°C/1 year (Do not lower than -25°C)**Formulation** PBS, 50% glycerol, 0.05% Proclin 300, 0.05% BSA

Basic Information

Clonality Monoclonal**Clone Number** PT0919R

Immunogen Information

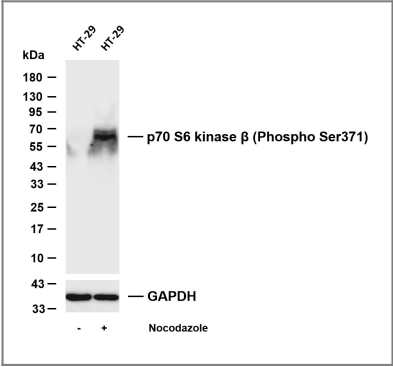
Specificity

Phospho-p70 S6 kinase β (S371) Antibody detects endogenous levels of p70 S6 kinase β protein only when phosphorylated at S371. The name of modified sites may be influenced by many factors, such as species (the modified site was not originally found in human samples) and the change of protein sequence (the previous protein sequence is incomplete, and the protein sequence may be prolonged with the development of protein sequencing technology). When naming, we will use the "numbers" in historical reference to keep the sites consistent with the reports. The antibody binds to the following modification sequence (lowercase letters are modification sites): DSpDD

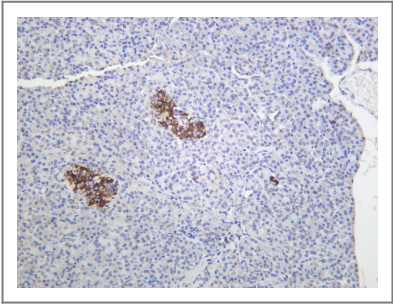
Target Information

| | | | |
|-----------------------|---|-------------------------|--------------------------|
| Gene name | RPS6KB2 | | |
| Protein Name | Ribosomal protein S6 kinase beta-2 | | |
| | Organism | Gene ID | UniProt ID |
| | Human | 6199 ; | Q9UBS0 ; |
| | Mouse | 58988 ; | Q9Z1M4 ; |
| Cellular Localization | Cytoplasm. Nucleus. | | |
| Tissue specificity | Brain,Epithelium,Lymph, | | |
| Function | Catalytic activity:ATP + a protein = ADP + a phosphoprotein.,Function:Phosphorylates specifically ribosomal protein S6.,PTM:Phosphorylated upon DNA damage, probably by ATM or ATR.,similarity:Belongs to the protein kinase superfamily.,similarity:Belongs to the protein kinase superfamily. AGC Ser/Thr protein kinase family. S6 kinase subfamily.,similarity:Contains 1 AGC-kinase C-terminal domain.,similarity:Contains 1 protein kinase domain., | | |

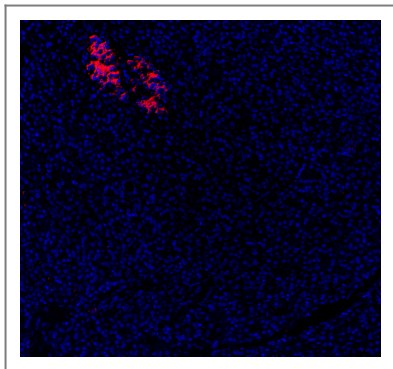
Validation Data



Various whole cell lysates were separated by 4-20% SDS-PAGE, and the membrane was blotted with anti-p70 S6 kinase β (Phospho Ser371) antibody. The HRP-conjugated Goat anti-Rabbit IgG (H + L) antibody was used to detect the antibody. Lane 1: HT-29 Lane 2: HT-29 was treated with Nocodazole(50ng/ml) for 48 hours Predicted band size: 53kDa Observed band size: 60kDa



Human pancreas was stained with anti-p70 S6 kinase β (Phospho Ser371) Rabbit antibody



Immunofluorescence analysis of Human pancreas

| Contact information

Orders: order.cn@immunoway.com
Support: support.cn@immunoway.com
Telephone: 400-8787-807(China)
Website: <http://www.immunoway.com.cn>
Address: 2200 Ringwood Ave San Jose, CA 95131 USA



Please scan the QR code
to access additional
product information:
p70 S6 kinase β
(Phospho Ser371)
(PT0919R) PT[®]
Rabbit mAb

For Research Use Only. Not for Use in Diagnostic Procedures.

[Antibody](#) | [ELISA Kits](#) | [Protein](#) | [Reagents](#)