

## mTOR (Phospho Ser2481) (PT0898R) PT® Rabbit mAb

CatalogNo: YM8667 **Recombinant** 

### Key Features

#### Host Species

- Rabbit

#### Reactivity

- Human, Mouse, Rat

#### Applications

- WB, IF, IP, ELISA

#### MW

- 289kD (Calculated)  
289kD (Observed)

#### Isotype

- IgG, Kappa

### Recommended Dilution Ratios

**WB 1:2000-1:10000****IF 1:200-1:1000****ELISA 1:5000-1:20000****IP 1:50-1:200**

### Storage

**Storage\*** -15°C to -25°C/1 year(Do not lower than -25°C)**Formulation** PBS, 50% glycerol, 0.05% Proclin 300, 0.05%BSA

### Basic Information

**Clonality** Monoclonal**Clone Number** PT0898R

### Immunogen Information

#### Specificity

Phospho-mTOR (S2481) Antibody detects endogenous levels of mTOR protein only when phosphorylated at S2481. The name of modified sites may be influenced by many factors, such as species (the modified site was not originally found in human samples) and the change of protein sequence (the previous protein sequence is incomplete, and the protein sequence may be prolonged with the development of protein sequencing technology). When naming, we will use the "numbers" in historical reference to keep the sites consistent with the reports. The antibody binds to the following modification sequence (lowercase letters are modification sites):IHsFI

## Target Information

**Gene name** MTOR

**Protein Name** Serine/threonine-protein kinase mTOR

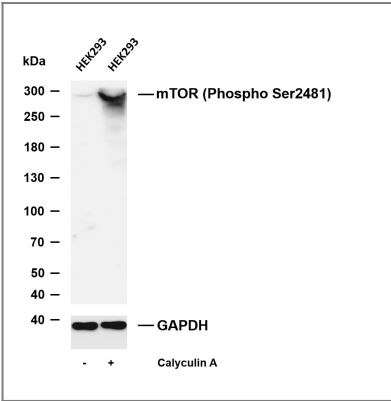
Organism	Gene ID	UniProt ID
Human	<a href="#">2475;</a>	<a href="#">P42345;</a>
Mouse	<a href="#">56717;</a>	<a href="#">Q9JLN9;</a>
Rat	<a href="#">56718;</a>	<a href="#">P42346;</a>

**Cellular Localization** Endoplasmic reticulum membrane ; Peripheral membrane protein ; Cytoplasmic side . Golgi apparatus membrane ; Peripheral membrane protein ; Cytoplasmic side . Mitochondrion outer membrane ; Peripheral membrane protein ; Cytoplasmic side . Lysosome . Cytoplasm . Nucleus, PML body . Microsome membrane . Lysosome membrane . Cytoplasmic vesicle, phagosome . Shuttles between cytoplasm and nucleus. Accumulates in the nucleus in response to hypoxia (By similarity). Targeting to lysosomes depends on amino acid availability and RRAGA and RRAGB (PubMed:18497260, PubMed:20381137). Lysosome targeting also depends on interaction with MEAK7. Translocates to the lysosome membrane in the presence of TM4SF5 (PubMed:30956113). .

**Tissue specificity** Expressed in numerous tissues, with highest levels in testis.

**Function** Function:Acts as the target for the cell-cycle arrest and immunosuppressive effects of the FKBP12-rapamycin complex. Part of the TORC2 complex which plays a critical role in AKT1 Ser-473 phosphorylation, and may modulate the phosphorylation of PKCA and regulate actin cytoskeleton organization.,similarity:Belongs to the PI3/PI4-kinase family.,similarity:Contains 1 FAT domain.,similarity:Contains 1 FATC domain.,similarity:Contains 1 PI3K/PI4K domain.,similarity:Contains 7 HEAT repeats.,subunit:Interacts with the FKBP12-rapamycin complex. Binds UBQLN1. Forms part of the mammalian target of rapamycin 2 complex (TORC2) comprised of FRAP1, GBL, PRR5, RICTOR and SIN. TORC2 does not bind to and is not sensitive to FKBP12-rapamycin. Binds directly to PRR5 and RICTOR within the TORC2 complex.,tissue specificity:Expressed in numerous tissues, with highest levels in testis.,

## Validation Data



Various whole cell lysates were separated by 4-20% SDS-PAGE, and the membrane was blotted with anti-mTOR (Phospho Ser2481) (PT0898R) antibody. The HRP-conjugated Goat anti-Rabbit IgG (H + L) antibody was used to detect the antibody. Lane 1: HEK293 Lane 2: HEK293 was treated with Calyculin A(100nM) for 1 hour Predicted band size: 289kDa Observed band size: 289kDa

## | Contact information

Orders: order.cn@immunoway.com  
Support: support.cn@immunoway.com  
Telephone: 400-8787-807(China)  
Website: <http://www.immunoway.com.cn>  
Address: 2200 Ringwood Ave San Jose, CA 95131 USA



Please scan the QR code  
to access additional  
product information:  
**mTOR (Phospho  
Ser2481) (PT0898R)  
PT® Rabbit mAb**

---

For Research Use Only. Not for Use in Diagnostic Procedures.

[Antibody](#) | [ELISA Kits](#) | [Protein](#) | [Reagents](#)