

## PU.1 (PT0951R) PT™ Rabbit mAb

CatalogNo: YM8650 **Recombinant** 

### Key Features

#### Host Species

- Rabbit

#### Reactivity

- Human, Mouse, Rat

#### Applications

- WB, IHC, IF, ELISA

#### MW

- 31kD (Calculated)
- 42kD (Observed)

#### Isotype

- IgG, Kappa

### Storage

**Storage\*** -15°C to -25°C/1 year (Do not lower than -25°C)**Formulation** PBS, 50% glycerol, 0.05% Proclin 300, 0.05% BSA

### Recommended Dilution Ratios

**IHC 1:200-1:1000****WB 1:2000-1:10000****IF 1:200-1:1000****ELISA 1:5000-1:20000**

### Basic Information

**Clonality** Monoclonal**Clone Number** PT0951R

### Immunogen Information

**Specificity** Endogenous

---

## | Target Information

**Gene name** SPI1

**Protein Name** Transcription factor PU.1

Organism	Gene ID	UniProt ID
Human	<a href="#">6688</a> ;	<a href="#">P17947</a> ;
Mouse	<a href="#">20375</a> ;	<a href="#">P17433</a> ;
Rat	<a href="#">366126</a> ;	<a href="#">Q6BDS1</a> ;

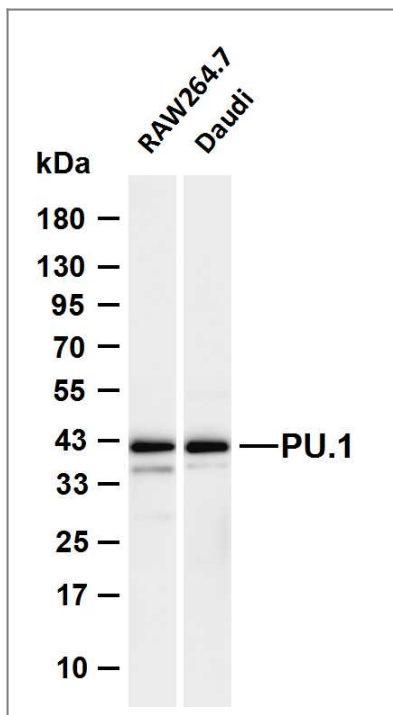
**Cellular Localization** Nucleus .

**Tissue specificity** In the bone marrow, concentrated in hematopoietic stem cell, lymphoid progenitor, myeloid lineage (granulocyte macrophage progenitors, classical dendritic cells, monocytes) and B-cell clusters. Among B-cells, predominantly expressed in pre-B1 cells (PubMed:33951726). Expressed in germinal center B-cells (PubMed:23166356).

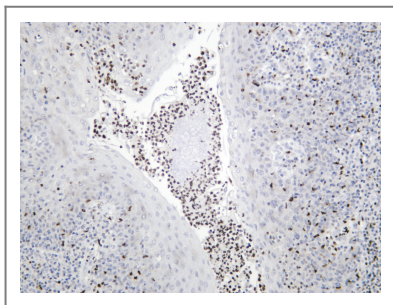
**Function** Function: Binds to the PU-box, a purine-rich DNA sequence (5'-GAGGAA-3') that can act as a lymphoid-specific enhancer. This protein is a transcriptional activator that may be specifically involved in the differentiation or activation of macrophages or B-cells. Also binds RNA and may modulate pre-mRNA splicing., induction: Highly expressed in both FV-P and FV-A-induced erythro-leukemia cell lines that have undergone rearrangements of the Spi-1 gene due to the insertion of SFFV., similarity: Belongs to the ETS family., similarity: Contains 1 ETS DNA-binding domain., subunit: Binds DNA as a monomer. Interacts with RUNX1 and SPIB. Interacts with CEBPD and NONO.,

---

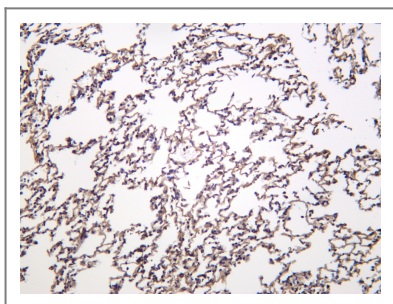
## | Validation Data



Various whole cell lysates were separated by 4-20% SDS-PAGE, and the membrane was blotted with anti-PU.1 (PT0951R) antibody. The HRP-conjugated Goat anti-Rabbit IgG (H + L) antibody was used to detect the antibody. Lane 1: RAW264.7 Lane 2: Daudi Predicted band size: 31kDa Observed band size: 42kDa



Human tonsil was stained with anti-PU.1 (PT0951R) Rabbit antibody



Mouse lung was stained with anti-PU.1 (PT0951R) Rabbit antibody

## Contact information

Orders: order.cn@immunoway.com  
 Support: support.cn@immunoway.com  
 Telephone: 400-8787-807(China)  
 Website: <http://www.immunoway.com.cn>  
 Address: 2200 Ringwood Ave San Jose, CA 95131 USA



Please scan the QR code to access additional product information:  
**PU.1 (PT0951R) PT™**  
**Rabbit mAb**