

MTCO2 (PT0385R) PT™ Rabbit mAb

CatalogNo: YM8607 **Recombinant** 

Key Features

Host Species

- Rabbit

Reactivity

- Human

Applications

- WB,IHC,IF,IP,ELISA

MW

- 26kD (Calculated)
21kD (Observed)

Isotype

- IgG,Kappa

Storage

Storage* -15°C to -25°C/1 year(Do not lower than -25°C)

Formulation PBS, 50% glycerol, 0.05% Proclin 300, 0.05%BSA

Recommended Dilution Ratios

IHC 1:200-1000

WB 1:1000-5000

IF 1:200-1000

ELISA 1:5000-20000

IP 1:50-200

Basic Information

Clonality Monoclonal

Clone Number PT0385R

Immunogen Information

Specificity Endogenous

| Target Information

Gene name MT-CO2 COII COXII MTCO2

Protein Name Cytochrome c oxidase subunit 2 (Cytochrome c oxidase polypeptide II)

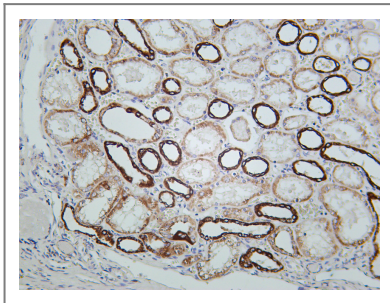
Organism	Gene ID	UniProt ID
Human	4513 ;	P00403 ;
Mouse		P00405 ;
Rat		P00406 ;

Cellular Localization Cytoplasmic

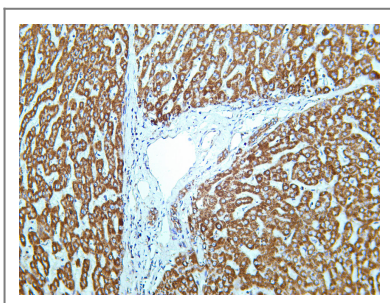
Tissue specificity Blood,Bone fossil,Bones,Breast cancer,Distant normal tissue,Endometrial ade

Function cofactor:Copper A.,Disease:Defects in MT-CO2 are a cause of cytochrome c oxidase deficiency (COX deficiency) [MIM:220110]; also called mitochondrial complex IV deficiency. COX deficiency is a clinically heterogeneous disorder. The clinical features are ranging from isolated myopathy to severe multisystem disease, with onset from infancy to adulthood.,Disease:Defects in MT-CO2 are associated with tumor formation.,Function:Cytochrome c oxidase is the component of the respiratory chain that catalyzes the reduction of oxygen to water. Subunits 1-3 form the functional core of the enzyme complex. Subunit 2 transfers the electrons from cytochrome c via its binuclear copper A center to the bimetallic center of the catalytic subunit 1.,similarity:Belongs to the cytochrome c oxidase subunit 2 family.,

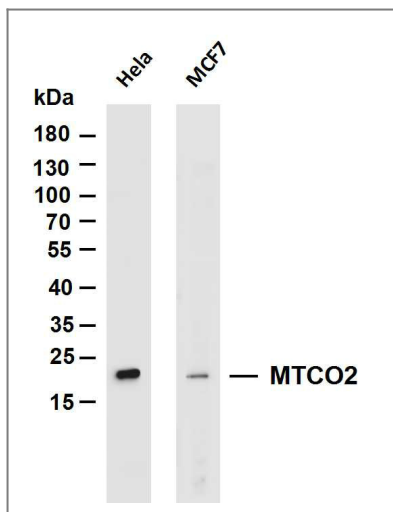
| Validation Data



Human kidney was stained with Anti-MTCO2 rabbit antibody



Human liver was stained with Anti-MTCO2 rabbit antibody



Various whole cell lysates were separated by 4-20% SDS-PAGE, and the membrane was blotted with anti-MTCO2 antibody. The HRP-conjugated Goat anti-Rabbit IgG(H + L) antibody was used to detect the antibody. Lane 1: HeLa Lane 2: MCF7 Predicted band size: 26kDa Observed band size: 21kDa

Contact information

Orders: order.cn@immunoway.com
 Support: support.cn@immunoway.com
 Telephone: 400-8787-807(China)
 Website: <http://www.immunoway.com.cn>
 Address: 2200 Ringwood Ave San Jose, CA 95131 USA



Please scan the QR code to access additional product information:
MTCO2 (PT0385R)
PT™ Rabbit mAb

For Research Use Only. Not for Use in Diagnostic Procedures.

[Antibody](#) | [ELISA Kits](#) | [Protein](#) | [Reagents](#)