

## FBX32 (PT0970R) PT® Rabbit mAb

CatalogNo: YM8584 **Recombinant** 

### Key Features

#### Host Species

- Rabbit

#### Reactivity

- Human, Mouse, Rat

#### Applications

- WB, IF, IP, ELISA

#### MW

- 42kD (Calculated)
- 42kD (Observed)

#### Isotype

- IgG, Kappa

### Recommended Dilution Ratios

**WB 1:2000-1:10000**

**IF 1:200-1:1000**

**ELISA 1:5000-1:20000**

**IP 1:50-1:200**

### Storage

**Storage\*** -15°C to -25°C/1 year(Do not lower than -25°C)

**Formulation** PBS, 50% glycerol, 0.05% Proclin 300, 0.05%BSA

### Basic Information

**Clonality** Monoclonal

**Clone Number** PT0970R

### Immunogen Information

**Specificity** Endogenous

## Target Information

**Gene name** FBXO32

**Protein Name** FBX32

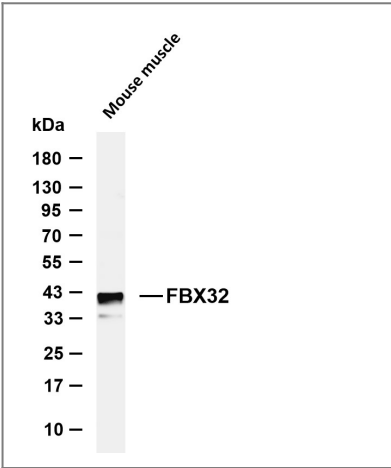
| Organism | Gene ID                  | UniProt ID               |
|----------|--------------------------|--------------------------|
| Human    | <a href="#">114907</a> ; | <a href="#">Q969P5</a> ; |
| Mouse    | <a href="#">67731</a> ;  | <a href="#">Q9CPU7</a> ; |
| Rat      | <a href="#">171043</a> ; | <a href="#">Q91Z62</a> ; |

**Cellular Localization** Cytoplasm . Nucleus . Shuttles between cytoplasm and the nucleus.

**Tissue specificity** Specifically expressed in cardiac and skeletal muscle.

**Function** Function:Substrate recognition component of a (SKP1-CUL1-F-box protein) E3 ubiquitin-protein ligase complex which mediates the ubiquitination and subsequent proteasomal degradation of target proteins. Probably recognizes and binds to phosphorylated target proteins during skeletal muscle atrophy. Recognizes TERF1.,pathway:Protein modification; protein ubiquitination.,similarity:Contains 1 F-box domain.,subunit:Part of the SCF (SKP1-CUL1-F-box) E3 ubiquitin-protein ligase complex SCF(FBXO32) formed of CUL1, SKP1A, RBX1 and FBXO32.,tissue specificity:Specifically expressed in cardiac and skeletal muscle.,

## Validation Data



Various whole cell lysates were separated by 4-20% SDS-PAGE, and the membrane was blotted with anti-FBX32 (PT0970R) antibody. The HRP-conjugated Goat anti-Rabbit IgG (H + L) antibody was used to detect the antibody. Lane 1: Mouse muscle Predicted band size: 42kDa Observed band size: 42kDa

## Contact information

Orders: order.cn@immunoway.com  
Support: support.cn@immunoway.com  
Telephone: 400-8787-807(China)  
Website: <http://www.immunoway.com.cn>  
Address: 2200 Ringwood Ave San Jose, CA 95131 USA



Please scan the QR code  
to access additional  
product information:  
**FBX32 (PT0970R)**  
**PT® Rabbit mAb**

---

For Research Use Only. Not for Use in Diagnostic Procedures.

[Antibody](#) | [ELISA Kits](#) | [Protein](#) | [Reagents](#)