

Syk (Phospho Tyr525/526) (PT0753R) PT™ Rabbit mAb

CatalogNo: YM8562 **Recombinant** 

Key Features

Host Species

- Rabbit

Reactivity

- Human, Mouse, Rat

Applications

- WB, IF, IP, ELISA

MW

- 72kD (Calculated)
72kD (Observed)

Isotype

- IgG, Kappa

Recommended Dilution Ratios

WB 1:2000-1:10000**IF 1:200-1:1000****ELISA 1:5000-1:20000****IP 1:50-1:200**

Storage

Storage* -15°C to -25°C/1 year (Do not lower than -25°C)**Formulation** PBS, 50% glycerol, 0.05% Proclin 300, 0.05% BSA

Basic Information

Clonality Monoclonal**Clone Number** PT0753R

Immunogen Information

Specificity

Antibody detects endogenous levels of syk protein only when phosphorylated at Tyr525/526 of human Syk or Tyr519/520 of mouse Syk. It also detects Syk protein when singly phosphorylated at Tyr526 of human Syk or Tyr520 of mouse Syk. The name of modified sites may be influenced by many factors, such as species (the modified site was not originally found in human samples) and the change of protein sequence (the previous protein sequence is incomplete, and the protein sequence may be prolonged with the development of protein sequencing technology). When naming, we will use the "numbers" in historical reference to keep the sites consistent with the reports. The antibody binds to the following modification sequence (lowercase letters are modification sites): ENyyKA

Target Information

Gene name SYK

Protein Name Tyrosine-protein kinase SYK

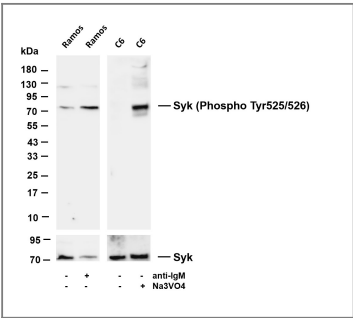
Organism	Gene ID	UniProt ID
Human	6850 ;	P43405 ;
Mouse	20963 ;	P48025 ;
Rat	25155 ;	Q64725 ;

Cellular Localization Cell membrane . Cytoplasm, cytosol .

Tissue specificity Widely expressed in hematopoietic cells (at protein level) (PubMed:8163536). Expressed in neutrophils (at protein level) (PubMed:15123770). Within the B-cell compartment, expressed from pro- and pre-B cells to plasma cells (PubMed:8163536).

Function Catalytic activity:ATP + a [protein]-L-tyrosine = ADP + a [protein]-L-tyrosine phosphate.,Function:Positive effector of BCR-stimulated responses. Couples the B-cell antigen receptor (BCR) to the mobilization of calcium ion either through a phosphoinositide 3-kinase-dependent pathway, when not phosphorylated on tyrosines of the linker region, or through a phospholipase C-gamma-dependent pathway, when phosphorylated on Tyr-348 and Tyr-352. Thus the differential phosphorylation of Syk can determine the pathway by which BCR is coupled to the regulation of intracellular calcium ion.,PTM:Autophosphorylated.,PTM:Phosphorylation on Tyr-323 creates a binding site for c-Cbl, an adapter protein that serves as a negative regulator of BCR-stimulated calcium ion signaling.,PTM:Phosphorylation on Tyr-348 and Tyr-352 enhances the phosphorylation and activation of phospholipase C-gamma and the early phase of calcium ion mobilization via a phosphoinositide 3-kinase-independent pathway.,PTM:Ubiquitinated by CBLB after BCR activation; which promotes proteasomal degradation.,similarity:Belongs to the protein kinase superfamily. Tyr protein kinase family.,similarity:Belongs to the protein kinase superfamily. Tyr protein kinase family. SYK/ZAP-70 subfamily.,similarity:Contains 1 protein kinase domain.,similarity:Contains 2 SH2 domains.,subunit:Interacts with CBL and SLA when it is phosphorylated. The interaction with SLA may link it to CBL, leading to its destruction. Interacts with phosphorylated NFAM1 (By similarity). Interacts with Epstein-Barr virus LMP2A. Interacts through its SH2 domains with the phosphorylated ITAM domain of CD79A which stimulates SYK autophosphorylation and activation. Interacts with FCRL3.,

Validation Data



Various whole cell lysates were separated by 4-20% SDS-PAGE, and the membrane was blotted with anti-Syk (Phospho Tyr525/526) antibody. The HRP-conjugated Goat anti-Rabbit IgG(H + L) antibody was used to detect the antibody. Lane 1: Ramos Lane 2: Ramos was treated with anti-IgM(12 ug/ml) for 2 minutes Lane 3: C6 Lane 4: C6 was treated with Na3VO4(10 nM) for 1 hour Predicted band size: 72kDa Observed band size: 72kDa

| Contact information

Orders: order.cn@immunoway.com
Support: support.cn@immunoway.com
Telephone: 400-8787-807(China)
Website: <http://www.immunoway.com.cn>
Address: 2200 Ringwood Ave San Jose, CA 95131 USA



Please scan the QR code
to access additional
product information:

**Syk (Phospho
Tyr525/526)
(PT0753R) PT™
Rabbit mAb**

For Research Use Only. Not for Use in Diagnostic Procedures.

[Antibody](#) | [ELISA Kits](#) | [Protein](#) | [Reagents](#)