

CDKN2A/p14ARF (PT0332R) PT™ Rabbit mAb

CatalogNo: YM8543 **Recombinant** 

Key Features

Host Species

- Rabbit

Reactivity

- Human

Applications

- WB,IF,IP,ELISA

MW

- 14kD (Calculated)
16kD (Observed)

Isotype

- IgG,Kappa

Storage

Storage* -15°C to -25°C/1 year(Do not lower than -25°C)**Formulation** PBS, 50% glycerol, 0.05% Proclin 300, 0.05%BSA

Recommended Dilution Ratios

WB 1:1000-5000**IF 1:200-1000****ELISA 1:5000-20000****IP 1:50-200**

Basic Information

Clonality Monoclonal**Clone Number** PT0332R

Immunogen Information

Specificity Endogenous

Target Information

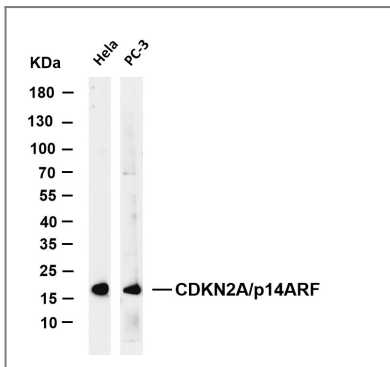
Gene name CDKN2A

Protein Name Cyclin-dependent kinase inhibitor 2A isoform 4

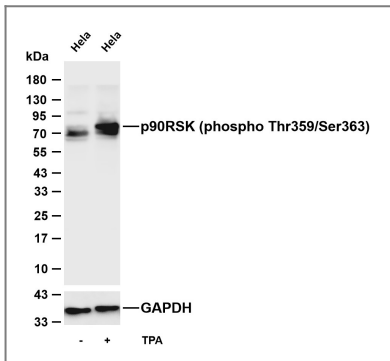
Organism	Gene ID	UniProt ID
Human	1029;	Q8N726;
Mouse		Q64364;

Cellular Localization Nuclear

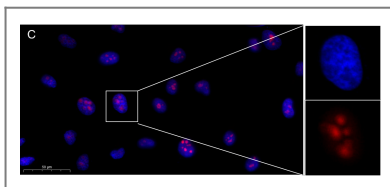
Validation Data



Various whole cell lysates were separated by 4-20% SDS-PAGE, and the membrane was blotted with anti-CDKN2A/p14ARF antibody. The HRP-conjugated Goat anti-Rabbit IgG(H + L) antibody was used to detect the antibody. Lane 1: HeLa Lane 2: PC-3 Predicted band size: 14kDa Observed band size: 16kDa



Various whole cell lysates were separated by 4-20% SDS-PAGE, and the membrane was blotted with anti-p90RSK (phospho Thr359/Ser363) (PT0332R) antibody. The HRP-conjugated Goat anti-Rabbit IgG (H + L) antibody was used to detect the antibody. Lane 1: HeLa Lane 2: HeLa was treated with TPA(200nM) for 30 minutes Predicted band size: 83kDa Observed band size: 83kDa



Immunofluorescence analysis of HeLa. Picture A: CDKN2A/p14ARF (PT0332R) PT™ Rabbit mAb (red). Picture B: DAPI (blue). Picture C: Merge of A+B

Contact information

Orders: order.cn@immunoway.com
Support: support.cn@immunoway.com
Telephone: 400-8787-807(China)
Website: <http://www.immunoway.com.cn>
Address: 2200 Ringwood Ave San Jose, CA 95131 USA



Please scan the QR code
to access additional
product information:
**CDKN2A/p14ARF
(PT0332R) PT™
Rabbit mAb**

For Research Use Only. Not for Use in Diagnostic Procedures.

[Antibody](#) | [ELISA Kits](#) | [Protein](#) | [Reagents](#)