

# Clathrin Heavy Chain 1 (PT0347R) PT™ Rabbit mAb

CatalogNo: YM8462 **Recombinant** 

## Key Features

### Host Species

- Rabbit

### Reactivity

- Human, Mouse, Rat

### Applications

- WB, IHC, IF, ELISA

### MW

- 192kD (Calculated)  
180kD (Observed)

### Isotype

- IgG, Kappa

## Recommended Dilution Ratios

**IHC 1:50-200**

**WB 1:500-1:2000**

**IF 1:200-1000**

**ELISA 1:5000-20000**

## Storage

**Storage\*** -15°C to -25°C/1 year (Do not lower than -25°C)

**Formulation** PBS, 50% glycerol, 0.05% Proclin 300, 0.05% BSA

## Basic Information

**Clonality** Monoclonal

**Clone Number** PT0347R

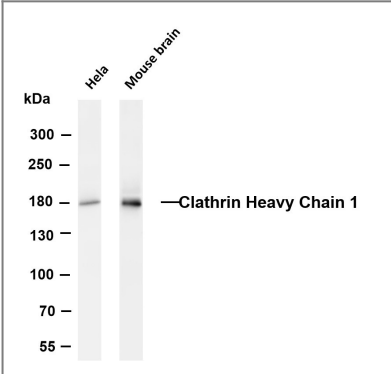
## Immunogen Information

**Specificity** Endogenous

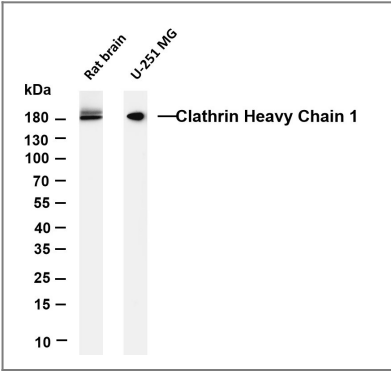
## Target Information

Gene name	CLTC CLH17 CLTCL2 KIAA0034		
Protein Name	Clathrin heavy chain 1 (Clathrin heavy chain on chromosome 17) (CLH-17)		
	Organism	Gene ID	UniProt ID
	Human	<a href="#">1213;</a>	<a href="#">Q00610;</a>
Cellular Localization	Cytoplasm		
Tissue specificity	Bone marrow,Brain,Cervix carcinoma,Colon,Epithelium,Fetal kidney,Hepatoma,Mammary c		
Function	Function:Clathrin is the major protein of the polyhedral coat of coated pits and vesicles. Two different adapter protein complexes link the clathrin lattice either to the plasma membrane or to the trans-Golgi network.,online information:Clathrin entry,similarity:Belongs to the clathrin heavy chain family.,subcellular location:Cytoplasmic face of coated pits and vesicles. Identified by mass spectrometry in melanosome fractions from stage I to stage IV.,subunit:Clathrin triskelions, composed of 3 heavy chains and 3 light chains, are the basic subunits of the clathrin coat. In the presence of light chains, hub assembly is influenced by both the pH and the concentration of calcium. Interacts with HIP1.,		

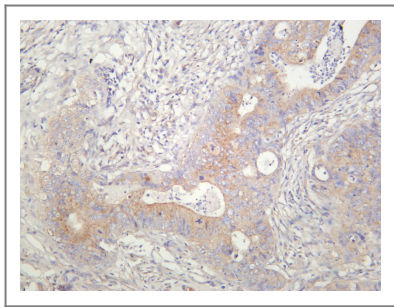
Validation Data



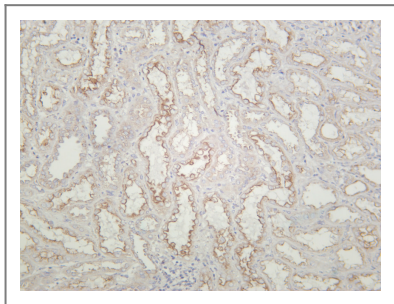
Various whole cell lysates were separated by 4-8% SDS-PAGE, and the membrane was blotted with anti-Clathrin Heavy Chain 1 antibody. The HRP-conjugated Goat anti-Rabbit IgG(H + L) antibody was used to detect the antibody. Lane 1: HeLa Lane 2: Mouse brain Predicted band size: 192kDa Observed band size: 180kDa



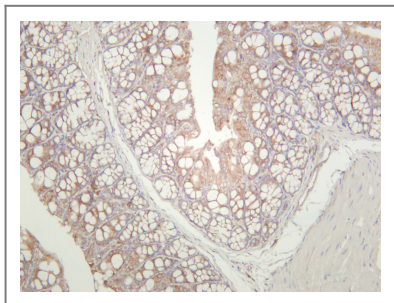
Various whole cell lysates were separated by 4-20% SDS-PAGE, and the membrane was blotted with anti-Clathrin Heavy Chain 1 antibody. The HRP-conjugated Goat anti-Rabbit IgG(H + L) antibody was used to detect the antibody. Lane 1:Rat brain Lane 2: U-251 MG Predicted band size: 192kDa Observed band size: 180kDa



Human colon carcinoma was stained with anti-Clathrin Heavy Chain 1 rabbit antibody



Human kidney was stained with anti-Clathrin Heavy Chain 1 rabbit antibody



Mouse colon was stained with anti-Clathrin Heavy Chain 1 rabbit antibody

## Contact information

Orders: [order.cn@immunoway.com](mailto:order.cn@immunoway.com)  
Support: [support.cn@immunoway.com](mailto:support.cn@immunoway.com)  
Telephone: 400-8787-807(China)  
Website: <http://www.immunoway.com.cn>  
Address: 2200 Ringwood Ave San Jose, CA 95131 USA



Please scan the QR code to access additional product information:

**Clathrin Heavy Chain 1 (PT0347R) PT™ Rabbit mAb**

For Research Use Only. Not for Use in Diagnostic Procedures.

[Antibody](#) | [ELISA Kits](#) | [Protein](#) | [Reagents](#)