

## CPT1A (PT0640R) PT® Rabbit mAb

CatalogNo: YM8449 **Recombinant** 

### Key Features

#### Host Species

- Rabbit

#### Reactivity

- Human, Mouse, Rat

#### Applications

- WB, IHC, IF, IP, ELISA

#### MW

- 88kD (Calculated)
- 88kD (Observed)

#### Isotype

- IgG, Kappa

### Recommended Dilution Ratios

IHC 1:200-1:1000

WB 1:2000-1:10000

IF 1:200-1:1000

ELISA 1:5000-1:20000

IP 1:50-1:200

### Storage

**Storage\*** -15°C to -25°C/1 year (Do not lower than -25°C)

**Formulation** PBS, 50% glycerol, 0.05% Proclin 300, 0.05% BSA

### Basic Information

**Clonality** Monoclonal

**Clone Number** PT0640R

### Immunogen Information

**Specificity** Endogenous

## Target Information

Gene name CPT1A CPT1

Protein Name CPT1A

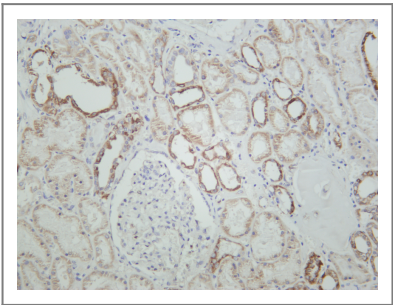
Organism	Gene ID	UniProt ID
Human	<a href="#">1374</a> ;	<a href="#">P50416</a> ;
Mouse	<a href="#">12894</a> ;	<a href="#">P97742</a> ;
Rat	<a href="#">25757</a> ;	<a href="#">P32198</a> ;

Cellular Localization Mitochondrion outer membrane

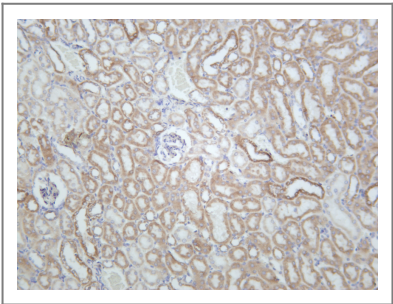
Tissue specificity Strong expression in kidney and heart, and lower in liver and skeletal muscle.

Function Catalytic activity:Palmitoyl-CoA + L-carnitine = CoA + L-palmitoylcarnitine.,Disease:Defects in CPT1A are the cause of carnitine palmitoyltransferase I deficiency (CPT-I deficiency) [MIM:255120]; also known as CPT1A deficiency. CPT I deficiency is a rare autosomal recessive metabolic disorder of long-chain fatty acid oxidation characterized by severe episodes of hypoketotic hypoglycemia usually occurring after fasting or illness. Onset is in infancy or early childhood.,enzyme regulation:Inhibitors such as malonyl-CoA interact with its catalytic domain and not with an associated regulatory component.,pathway:Lipid metabolism; fatty acid beta-oxidation.,similarity:Belongs to the carnitine/choline acetyltransferase family.,tissue specificity:Strong expression in kidney and heart, and lower in liver and skeletal muscle.,

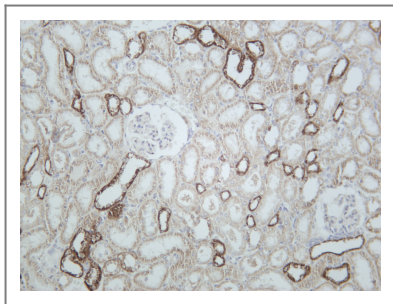
## Validation Data



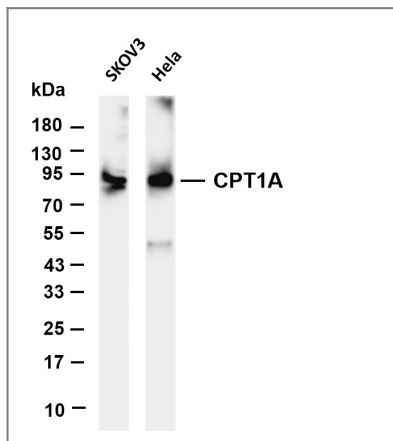
Human kidney was stained with anti-CPT1A rabbit antibody



Mouse kidney was stained with anti-CPT1A rabbit antibody



Rat kidney was stained with anti-CPT1A rabbit antibody



Various whole cell lysates were separated by 4-20% SDS-PAGE, and the membrane was blotted with anti-CPT1A antibody. The HRP-conjugated Goat anti-Rabbit IgG(H + L) antibody was used to detect the antibody. Lane 1: SKOV3 Lane 2: HeLa Predicted band size: 88kDa Observed band size: 88kDa

## Contact information

Orders: [order.cn@immunoway.com](mailto:order.cn@immunoway.com)  
 Support: [support.cn@immunoway.com](mailto:support.cn@immunoway.com)  
 Telephone: 400-8787-807(China)  
 Website: <http://www.immunoway.com.cn>  
 Address: 2200 Ringwood Ave San Jose, CA 95131 USA



Please scan the QR code  
to access additional  
product information:  
**CPT1A (PT0640R)**  
**PT® Rabbit mAb**

For Research Use Only. Not for Use in Diagnostic Procedures.

[Antibody](#) | [ELISA Kits](#) | [Protein](#) | [Reagents](#)