

ZO1 (PT0639R) PT™ Rabbit mAb

CatalogNo: YM8448 **Recombinant** 

Key Features

Host Species

- Rabbit

Reactivity

- Human, Mouse, Rat

Applications

- WB, IHC, IF, ELISA

MW

- 195kD (Calculated)
220kD (Observed)

Isotype

- IgG, Kappa

Recommended Dilution Ratios

IHC 1:1000-1:4000

WB 1:2000-1:10000

IF 1:200-1:1000

ELISA 1:5000-1:20000

Storage

Storage* -15°C to -25°C/1 year (Do not lower than -25°C)

Formulation PBS, 50% glycerol, 0.05% Proclin 300, 0.05% BSA

Basic Information

Clonality Monoclonal

Clone Number PT0639R

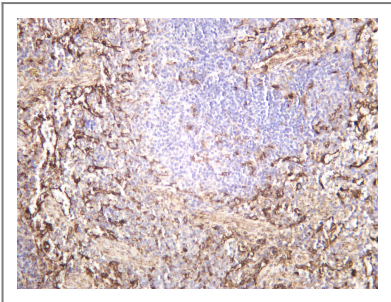
Immunogen Information

Specificity Endogenous

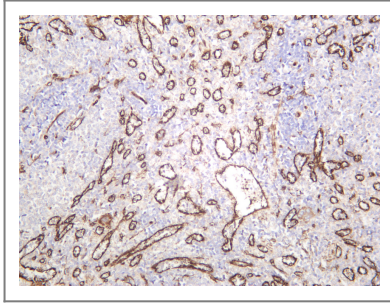
| Target Information

Gene name	TJP1 ZO1		
Protein Name	Tight junction protein ZO-1 (Tight junction protein 1) (Zona occludens protein 1) (Zonula occludens protein 1)		
	Organism	Gene ID	UniProt ID
	Human	7082 ;	Q07157 ;
	Mouse		P39447 ;
Cellular Localization	Membrane		
Tissue specificity	The alpha-containing isoform is found in most epithelial cell junctions. The short isoform is found both in endothelial cells and the highly specialized epithelial junctions of renal glomeruli and Sertoli cells of the seminiferous tubules.		
Function	Domain:The second PDZ domain mediates interaction with GJA12.,Function:The N-terminal may be involved in transducing a signal required for tight junction assembly, while the C-terminal may have specific properties of tight junctions. The alpha domain might be involved in stabilizing junctions.,PTM:Phosphorylated.,similarity:Belongs to the MAGUK family.,similarity:Contains 1 guanylate kinase-like domain.,similarity:Contains 1 PDZ (DHR) domain.,similarity:Contains 1 SH3 domain.,similarity:Contains 1 ZU5 domain.,similarity:Contains 3 PDZ (DHR) domains.,subcellular location:Movement of ZO-1 from the cytoplasm to membrane is an early event occurring concurrently with cell-cell contact.,subunit:Interacts with HSPA4 and KIRREL1 (By similarity). Homodimer, and heterodimer with TJP2/ZO-2 and TJP3/ZO-3. Interacts with occludin, claudins, CGN/cingulin, CXADR, GJA12, GJD3 and UBN1.,tissue specificity:The alpha-containing isoform is found in most epithelial cell junctions. The short isoform is found both in endothelial cells and the highly specialized epithelial junctions of renal glomeruli and Sertoli cells of the seminiferous tubules.,		

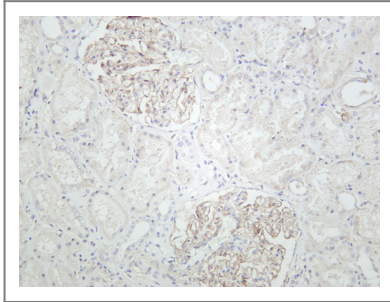
| Validation Data



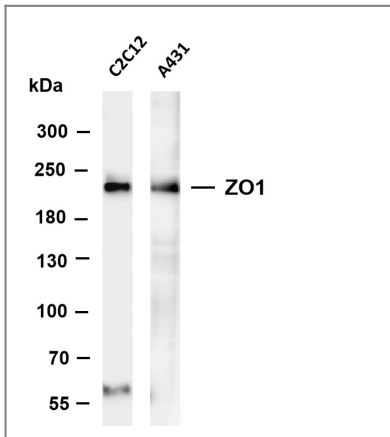
Mouse spleen was stained with anti-ZO1 rabbit antibody



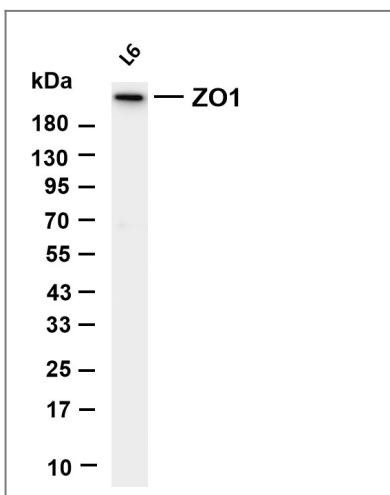
Rat spleen was stained with anti-ZO1 rabbit antibody



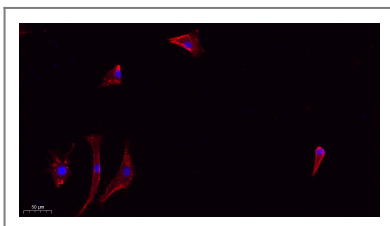
Human kidney was stained with anti-ZO1 rabbit antibody



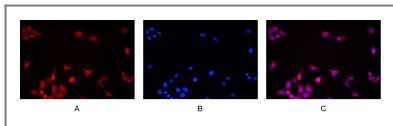
Various whole cell lysates were separated by 4-8% SDS-PAGE, and the membrane was blotted with anti-ZO1 antibody. The HRP-conjugated Goat anti-Rabbit IgG(H + L) antibody was used to detect the antibody. Lane 1: C2C12 Lane 2: A431 Predicted band size: 195kDa Observed band size: 220kDa



Various whole cell lysates were separated by 4-20% SDS-PAGE, and the membrane was blotted with anti-ZO1 antibody. The HRP-conjugated Goat anti-Rabbit IgG(H + L) antibody was used to detect the antibody. Lane 1: L6 Predicted band size: 195kDa Observed band size: 220kDa



Immunofluorescence analysis of A549. 1,primary Antibody(red) was diluted at 1:200(4°C overnight). 2, Goat Anti Rabbit IgG (H&L) - Alexa Fluor 594 Secondary antibody was diluted at 1:1000(room temperature, 50min).3, DAPI(blue) 10min.



Immunofluorescence analysis of HEK293. Picture A: ZO-1 antibody (red).
Picture B: DAPI (blue). Picture C: Merge of A+B

Contact information

Orders: order.cn@immunoway.com
Support: support.cn@immunoway.com
Telephone: 400-8787-807(China)
Website: <http://www.immunoway.com.cn>
Address: 2200 Ringwood Ave San Jose, CA 95131 USA



Please scan the QR code
to access additional
product information:
ZO1 (PT0639R) PT™
Rabbit mAb

For Research Use Only. Not for Use in Diagnostic Procedures.

[Antibody](#) | [ELISA Kits](#) | [Protein](#) | [Reagents](#)