

## c-Jun (Phospho Ser63) (PT0608R) PT™ Rabbit mAb

CatalogNo: YM8436 **Recombinant** 

### Key Features

#### Host Species

- Rabbit

#### Reactivity

- Human, Mouse, Rat

#### Applications

- WB, IHC, IF, IP, ELISA

#### MW

- 36kD (Calculated)
- 48kD (Observed)

#### Isotype

- IgG, Kappa

### Recommended Dilution Ratios

IHC 1:100-1:500

WB 1:2000-1:10000

IF 1:200-1:1000

ELISA 1:5000-1:20000

IP 1:50-1:200

### Storage

**Storage\*** -15°C to -25°C/1 year (Do not lower than -25°C)**Formulation** PBS, 50% glycerol, 0.05% Proclin 300, 0.05% BSA

### Basic Information

**Clonality** Monoclonal**Clone Number** PT0608R

### Immunogen Information

#### Specificity

Phospho-AP-1 (S63) Antibody detects endogenous levels of AP-1 protein only when phosphorylated at S63. The name of modified sites may be influenced by many factors, such as species (the modified site was not originally found in human samples) and the change of protein sequence (the previous protein sequence is incomplete, and the protein sequence may be prolonged with the development of protein sequencing technology). When naming, we will use the "numbers" in historical reference to keep the sites consistent with the reports. The antibody binds to the following modification sequence (lowercase letters are modification sites): LTSPD

## Target Information

Gene name JUN

Protein Name Transcription factor AP-1;jun;c-jun; AP-1

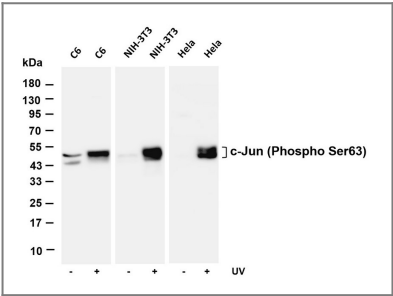
Organism	Gene ID	UniProt ID
Human	<a href="#">3725;</a>	<a href="#">P05412;</a>
Mouse	<a href="#">16476;</a>	<a href="#">P05627;</a>
Rat	<a href="#">24516;</a>	<a href="#">P17325;</a>

Cellular Localization Nucleus.

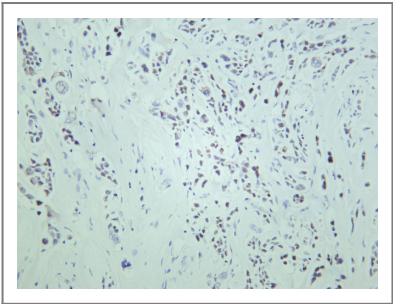
Tissue specificity Expressed in the developing and adult prostate and prostate cancer cells.

Function:Transcription factor that recognizes and binds to the enhancer heptamer motif 5'-TGA[CG]TCA-3'.PTM:Phosphorylation enhances the transcriptional activity. Phosphorylated by PRKDC.,similarity:Belongs to the bZIP family.,similarity:Belongs to the bZIP family. Jun subfamily.,similarity:Contains 1 bZIP domain.,subunit:Heterodimer with either FOS or BATF3. Interacts with HIVP3 (By similarity). Interacts with SMAD3/SMAD4 heterodimers. Interacts with MYBBP1A, SPIB and TCF20. Interacts with COPS5; indirectly leading to its phosphorylation. Interacts with DSIPI; this interaction inhibits the binding of active AP1 to its target DNA.,

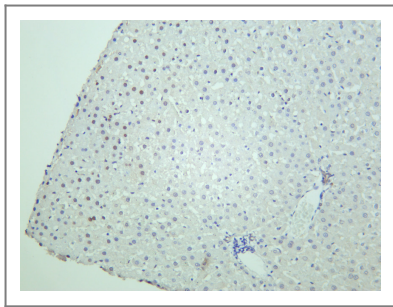
## Validation Data



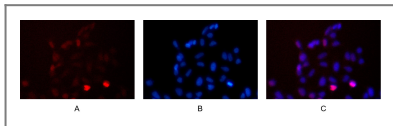
Various whole cell lysates were separated by 4-20% SDS-PAGE, and the membrane was blotted with anti-c-Jun (Phospho Ser63) antibody. The HRP-conjugated Goat anti-Rabbit IgG(H + L) antibody was used to detect the antibody. Lane 1: C6 Lane 2: C6 was treated with UV for 4 hours Lane 3: NIH-3T3 Lane 4: NIH-3T3 was treated with UV for 30 minutes then recover 30 minutes Lane 5: HeLa Lane 6: HeLa was treated with UV for 2 hours Predicted band size: 36kDa Observed band size: 48kDa



Human breast was stained with anti-c-Jun (Phospho Ser63) rabbit antibody



Rat liver was stained with anti-c-Jun (Phospho Ser63) rabbit antibody



Immunofluorescence analysis of HEK293. Picture A: c-Jun (Phospho Ser63) antibody (red). Picture B: DAPI (blue). Picture C: Merge of A+B

## Contact information

Orders: [order.cn@immunoway.com](mailto:order.cn@immunoway.com)  
 Support: [support.cn@immunoway.com](mailto:support.cn@immunoway.com)  
 Telephone: 400-8787-807(China)  
 Website: <http://www.immunoway.com.cn>  
 Address: 2200 Ringwood Ave San Jose, CA 95131 USA



Please scan the QR code to access additional product information:  
**c-Jun (Phospho Ser63) (PT0608R) PT™ Rabbit mAb**

For Research Use Only. Not for Use in Diagnostic Procedures.

[Antibody](#) | [ELISA Kits](#) | [Protein](#) | [Reagents](#)