

Granzyme B (PT0581R) PT™ Rabbit mAb

CatalogNo: YM8393 **Recombinant** 

Key Features

Host Species

- Rabbit

Reactivity

- Human,

Applications

- WB,IHC,IF,IP,ELISA

MW

- 28kD (Calculated)
- 37kD (Observed)

Isotype

- IgG,Kappa

Recommended Dilution Ratios

IHC 1:1000-1:4000

WB 1:2000-1:10000

IF 1:200-1:1000

ELISA 1:5000-1:20000

IP 1:50-1:200

Storage

Storage* -15°C to -25°C/1 year(Do not lower than -25°C)

Formulation PBS, 50% glycerol, 0.05% Proclin 300, 0.05%BSA

Basic Information

Clonality Monoclonal

Clone Number PT0581R

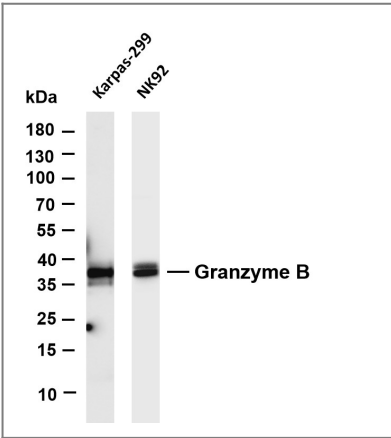
Immunogen Information

Specificity Endogenous

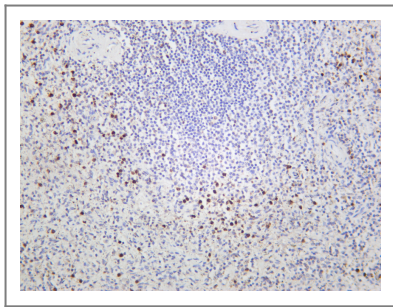
Target Information

Gene name	GZMB CGL1 CSPB CTLA1 GRB		
Protein Name	Granzyme B (C11) (CTLA-1) (Cathepsin G-like 1) (CTSG1) (Cytotoxic T-lymphocyte proteinase 2) (Lymphocyte protease) (Fragmentin-2) (Granzyme-2) (Human lymphocyte protein) (HLP) (SECT) (T-cell serine protease 1-3E)		
	Organism	Gene ID	UniProt ID
	Human	3002;	P10144;
	Mouse	14939;	P04187;
	Rat	171528;	P18291;
Cellular Localization	Lysosome		
Tissue specificity	Breast carcinoma, Large granular lymphocyte leukemia, Pancreas,		
Function	Catalytic activity: Preferential cleavage: -Asp- -Xaa- >> -Asn- -Xaa- > -Met- -Xaa-, -Ser- -Xaa-. Function: This enzyme is necessary for target cell lysis in cell-mediated immune responses. It cleaves after Asp. Seems to be linked to an activation cascade of caspases (aspartate-specific cysteine proteases) responsible for apoptosis execution. Cleaves caspase-3, -7, -9 and 10 to give rise to active enzymes mediating apoptosis. induction: By staphylococcal enterotoxin A (SEA) in peripheral blood leukocytes. similarity: Belongs to the peptidase S1 family. similarity: Belongs to the peptidase S1 family. Granzyme subfamily. similarity: Contains 1 peptidase S1 domain. subcellular location: Cytoplasmic granules of cytolytic T-lymphocytes and natural killer cells.		

Validation Data



Various whole cell lysates were separated by 4-20% SDS-PAGE, and the membrane was blotted with anti-Granzyme B antibody. The HRP-conjugated Goat anti-Rabbit IgG(H + L) antibody was used to detect the antibody. Lane 1: Karpas-299 Lane 2: NK92 Predicted band size: 28kDa Observed band size: 37kDa



Human spleen was stained with anti-Granzyme B rabbit antibody

| Contact information

Orders: order.cn@immunoway.com
Support: support.cn@immunoway.com
Telephone: 400-8787-807(China)
Website: <http://www.immunoway.com.cn>
Address: 2200 Ringwood Ave San Jose, CA 95131 USA



Please scan the QR code
to access additional
product information:
**Granzyme B
(PT0581R) PT™
Rabbit mAb**

For Research Use Only. Not for Use in Diagnostic Procedures.

[Antibody](#) | [ELISA Kits](#) | [Protein](#) | [Reagents](#)